



**CEMENT CORPORATION OF INDIA LIMITED**  
(A GOVERNMENT OF INDIA ENTERPRISE)  
RAJBAN CEMENT FACTORY (ISO 9001:2015 Certified Company)  
Tehsil Paonta Sahib Distt. Sirmour – (HP)-173028  
Tel: (01704)266223 / Fax 266270  
Email: [rajban@ccilttd.in](mailto:rajban@ccilttd.in) CIN-U74899DL1965GOI004322  
Website: [www.ccilttd.in](http://www.ccilttd.in)

NIT No.: RCF/MM/204(23)/

Dated: 08.02.2024

**NOTICE INVITING E-TENDER (NIT)**  
(Only through e-procurement)

Online electronic bids through Electronic Tendering System (ETS) are inviting e-tender in Two Bid System for **Tender for the Supply of 1m<sup>3</sup> Bucket Assembly consisting of Bucket, Carriage body assembly, Traveling wheel assembly, Draw bar assembly, Side roller assembly, Jaw assembly & hangers.** The complete set of tender document is available on websites: [www.ccilttd.in](http://www.ccilttd.in), [www.eprocure.gov.in](http://www.eprocure.gov.in).

E-TENDER NO.	RCF/MM/204(23)/
MODE OF TENDER	e-Procurement System (Online Part A - Techno-Commercial Bid and Part B - Price Bid) through <a href="http://www.eprocure.gov.in">www.eprocure.gov.in</a>
Date of NIT available to parties to download	08.02.2024 at 14:30hrs
01 Earnest Money Deposit	Rs. 76000/-
02 Tender Fees	Nil
03 Transaction Fee	Nil
Date of Starting of e-Tender for submission of on line Techno-Commercial Bid and Price Bid at <a href="http://www.eprocure.gov.in">www.eprocure.gov.in</a>	From 08.02.2024 at 15:00hrs Till 23.02.2024 at 14:30hrs
Date & time of opening of Part-A (i.e. Techno-Commercial Bid) Part-B Price Bid: Date of opening of Part-B	24.02.2024 at 15:00 hrs To be communicated separately
Closing date of tender	23.02.2024 at 14:30hrs
Validity of bids	90 days from the date of the techno- commercial bid opening.

Offer is invited for the following as per details given below: -

The specification of 1m<sup>3</sup> Bucket Assembly consisting of Bucket, Carriage body assembly, Traveling wheel assembly, Draw bar assembly, Side roller assembly, Jaw assembly & hangers are as follows:

Assembly should be consisting of:

S.NO	Description of Items	Drawing No.	Quantity
01	Supply of 1M <sup>3</sup> Bucket assembly consisting of bucket, carriage body assembly, traveling wheel assembly, Draw bar assembly, side roller assembly, jaw assembly & hangers.(Consisting of followings)	M 1214-167	20 Sets
I)	Carriage assembly.	M1214-162	
	a)Bucked 1 M <sup>3</sup>	M-1214-109-136-137,138	
	b) Carriage body assy.	M-1214-113(Revised)	
	c) Carriage suspension pin castle nut, washer, split pin duly hardened & tempered.	M-1214-03	
	d) Bogie frame (left):	M-1214-87	
	Bogie frame (right):	M-1214-88	
	e) Bogie pivot pin assy. With nylon bush, lock nut and washer	M-1214-76	
II)	Traveling wheel assy. Consisting of following:		
	a)Carriage wheel hub	M-1214-86	
	b) Traveling disc	M-1214-48	
	c) Carriage wheel spindle	M- 1214-4& 13	
	d) Nylon tyres	M-1214-01	
	e) Bearings 6305 ZR SKF		
	f) Oil seal 62x35x10		
	g) M.S. bolt with castle Nut	M1214-134	
III)	Draw bar Assembly. Consisting of	M1214- 43, 16, 37& 38	
	a) Complete side roller assy.	M1214-12,90,89,20	
	b) Complete jaw assy.	M1214-41 &39,40, 47	
	c) Hanger for carriage	M1214-107&18, 64,108,123.	

Note:

1. Since these spares/ sub- assemblies are to be assembled at site for one assembly. Utmost care is to be taken for tolerances in machined parts/casted parts/ fabricated parts.

2. The tenders who fulfill the terms & conditions mentioned in the tender documents shall be considered.
3. The price- bid should be only as per CCI's price - bid format otherwise the tender is liable for rejection.
4. The tenderers are advised to offer their lowest rates taking into account the prevailing market conditions. There would generally be no negotiations hence please submit your most competitive prices while submitting the price bid. However, if the rate is still considered High, action as per prevailing instruction/guideline shall be taken.

HOD (MM)

**The tender documents comprise of following:-**

Annexure-A	Important Instructions to Bidders for E-Procurement
Annexure-B	Part-III- Special terms & conditions
Annexure-C	Techno Commercial Bid
Annexure-D	Price Bid (to be submitted duly filled in online as Part-B)
Available on website: www.ccilttd.in	General Term & conditions (GTC), Part I & II along with annexure 1 to 9 are available on website and have to attach with techno-commercial bid. Participants may download the GTC from our website in this sequence: 01. <a href="http://www.ccilttd.in">www.ccilttd.in</a> 02. Tenders 03. At serial No. 05

**HOD (MM)**



**Important Instructions to Bidders for E-procurement**

This is an e-procurement event of CEMENT CORPORATION OF INDIA LIMITED. The e-procurement service provider is [www.eprocure.gov.in](http://www.eprocure.gov.in).

You are requested to read the tender General Terms & Conditions (GTC) (**Annexure:1-9**) of this tender before submitting your online tender. Tenderers who do not comply with the conditions with documentary proof (wherever required) will not qualify in the Tender for opening of price bid.

1.	<p>Process of E-tender :</p> <p><b>Registration:</b></p> <p>The process involves vendor's registration with tender wizard e-procurement portal. Only after registration, the vendor(s) can submit his/their bids electronically. Electronic Bidding for submission of Techno-Commercial Bid as well as Price Bid over the internet will be done. The Vendor should possess Class III signing type digital certificate. Vendors are to make their own arrangement for bidding from a P.C. connected with Internet. Antares systems ltd is not responsible for making such arrangement. (Bids will not be recorded without Digital Signature).</p> <p><b>SPECIAL NOTE: THE PRICE BID AND THE TECHNO-COMMERCIAL BID HAS TO BE SUBMITTED ON-LINE AT <a href="http://www.eprocure.gov.in">www.eprocure.gov.in</a>.</b></p> <p>Vendors are required to register themselves online with <a href="http://www.eprocure.gov.in">www.eprocure.gov.in</a>, →Register Me' link. Filling up details and creating own user id and password→ Submit.Vendors will receive a system generated mail confirming their registration in their e-mail which has been provided during filling the registration form. In case of any clarification, please contact CCI/ Antares systems ltd, (before the scheduled time of the e- tender).</p> <p><b>Contact person (Cement Corporation of India):</b></p> <table border="0"> <tr> <td>1. HOD (MM)</td> <td>2. DGM (MECH)</td> </tr> <tr> <td>Landline: 01704-266227</td> <td>Mo. 06303223140</td> </tr> <tr> <td>Mobile: 07827989577</td> <td></td> </tr> <tr> <td>Email: <a href="mailto:ccimmrjo@rediffmail.com">ccimmrjo@rediffmail.com</a>,</td> <td></td> </tr> <tr> <td><a href="mailto:mm_rjo@ccilttd.in">mm_rjo@ccilttd.in</a></td> <td></td> </tr> </table> <p><b>B) System Requirement:</b> Windows 8,10 professional Operating System, internet browser-9,10 &amp;11 Signing type III digital signature Java JRE 6 and above</p>	1. HOD (MM)	2. DGM (MECH)	Landline: 01704-266227	Mo. 06303223140	Mobile: 07827989577		Email: <a href="mailto:ccimmrjo@rediffmail.com">ccimmrjo@rediffmail.com</a> ,		<a href="mailto:mm_rjo@ccilttd.in">mm_rjo@ccilttd.in</a>	
1. HOD (MM)	2. DGM (MECH)										
Landline: 01704-266227	Mo. 06303223140										
Mobile: 07827989577											
Email: <a href="mailto:ccimmrjo@rediffmail.com">ccimmrjo@rediffmail.com</a> ,											
<a href="mailto:mm_rjo@ccilttd.in">mm_rjo@ccilttd.in</a>											
2.	<p><b>(A)Part-A Techno-Commercial bid</b> will be opened electronically on specified date and time as given in the NIT. Bidder(s) can witness electronic opening of bid.</p> <p><b>(B) Part-B Price bid</b> will be opened electronically of only those bidder(s) who's Part-A Techno-Commercial Bid is found to be Techno-Commercially acceptable by CCI. Such bidder(s) will be intimated date of opening of Part-B Price bid, through valid email confirmed by them.</p>										

	<p><b>Note:</b></p> <p>The tenderers are advised to offer their highest possible rates taking into account the prevailing market conditions. There would generally be no negotiations hence please submit your most competitive prices while submitting the price bid. However, if the rate is still considered low, action as per prevailing instruction/guideline shall be taken.</p>
3.	All entries in the tender should be entered in online Technical & Commercial Formats without any ambiguity.
4.	<p>In case of failure to access the payment towards non-refundable fees for any reason, the vender, in term, will not have the access to on line e-tender and no correspondence in this respect will be entertained and CCI will not be responsible for any such lapses on this account. Bidder(s) are advised to make remittance of non-refundable fees through separate DD well in advance and verify completion of transaction in respect of non-refundable fees.</p> <p>Vendors are instructed to use <b>Upload Documents</b> link in My menu to upload documents in document library. Multiple documents can be uploaded. Maximum size of single document for upload is 5 MB.</p> <p>Once documents are uploaded in the library, vendors can attach documents through <b>Attach Document</b> link against the particular tender. For further assistance please follow instructions of vendor guide.</p>
5.	All notices/corrigendum and correspondence to the bidder(s) shall be sent by email only during the process till finalization of tender by CCI. Hence the bidders are required to ensure that their corporate email I.D. provided is valid and updated at the stage of registration of vendor with tender wizard (i.e. Service Provider). Bidders are also requested to ensure validity of their DSC (Digital Signature Certificate).
6.	The responsibility of downloading the related corrigenda, if any, will be that of the downloading parties.
7.	E-tender cannot be accessed after the due date and time mentioned in NIT.
8.	<p><b>Bidding in e-tender:</b></p> <p>a.) It is mandatory that all the bids are submitted with digital signature certificate otherwise the same will not be accepted by the system.</p> <p>b.) Buyer reserves the right to cancel or reject or accept or withdraw or extend the tender in full or part as the case may be without assigning any reason thereof.</p> <p>c.) No deviation of the terms and conditions of the tender document is acceptable. Submission of bid in the e-tender floor by any bidder confirms his acceptance of terms &amp; conditions for the tender.</p> <p>d.) Unit of Measure (UOM) is indicated in the e-tender Floor. Rate to be quoted should be in Indian Rupee as per UOM indicated in the e-tender floor/tender document.</p>
9.	Any order resulting from this open e-tender shall be governed by the terms and conditions mentioned therein.

10.	No deviation to the technical and commercial terms & conditions are allowed.
11.	After submitting online bid, the bidder cannot access the tender, once it has been submitted with digital signature
12.	CCI has the right to cancel this e-tender or extend the due date of receipt of bid(s) without assigning any reason thereof.
13	The online tender should be submitted strictly as per the terms and conditions and procedures laid down in the website <a href="http://www.cci-etender.com">www.cci-etender.com</a> of Antares systems Ltd.
14.	The bidders must upload all the documents required as per terms of NIT. Any other document uploaded which is not required as per the terms of the NIT shall not be considered.
15	The bid will be evaluated based on the filled-in technical & commercial formats.
16.	The documents uploaded by bidder(s) will be scrutinized. In case any of the information furnished by the bidder is found to be false during scrutiny, punitive action including suspension and banning of business can also be taken against defaulting bidders.
17	<b>Bidders are requested to read the vendor guide and see the video in the page <a href="http://www.eprocure.gov.in">www.eprocure.gov.in</a>, to familiarize themselves with the system before bidding.</b>

**For and on behalf of CCI LTD**

HOD (MM)

**CEMENT CORPORATION OF INDIA LIMITED**

(A Govt. of India Enterprises - ISO 9001:2015 Certified)

**Part-III SPECIAL TERM AND CONDITIONS**

**1.0 SPECIFICATIONS:**

1.1 The specifications of the **Complete Bucket Assembly** required are as per Annexure-C.

**2.0 QUANTITY:**

2.1 The quantity is clearly mentioned in Annexure-C

2.4 Non acceptance of indents by the supplier on any account fix quantity, delay in receipt of indent etc. will tantamount to breach of contract and supplier will be liable to pay penalty /liquidated damages as per decision of the Corporation based on the relevant paras of the terms of the contract.

**3.0 DELIVERY:**

3.1 **The supply has to be made in two phases (a lot of 10 buckets each). First lot within 12-16 weeks and second lot after three months of supply of first lot.**

3.2 The Unit shall place their order and the supplier shall supply the material within the delivery period as specified in the Annexure-C and as per schedule stipulated in the order.

3.3 All terms and conditions stipulated in the tender will be applicable to such ad-hoc requirements also.

3.4 The completion of delivery shall be on the date of the receipt of material at CCI's factory site. It shall be the responsibility of the supplier to ensure that the material reaches CCI's unit as per the delivery schedule given.

**4.0 PRICES:**

4.1 The rates should be quoted in our prescribed Price bid Performa as per Annexure-D indicating separately price for **Complete Bucket Assembly**.

4.2 The RATES offered shall be inclusive of packing and forwarding charges, freight, inspection charges and any other levies/ charges etc. and GST shall be extra. Necessary documents will have to be submitted by you for availing ITC on GST. The rates shall be firm throughout the supply of total quantity. Tenderers have to submit the MTC from a government approved lab.

## **5.0 PAYMENT TERMS:**

5.1 100% within 30 days from the date of receipt & acceptance of materials at our site after adjustment of recoveries due, if any as per CCI's assessment and L.D clause.

5.1.1 **LD:** In the event of goods not delivered on or before the date of delivery mentioned in the indent, a penalty @ ½% of the unexecuted order value per fortnight or part thereof shall be levied, subject to a maximum of 5% of total value of order..

5.2 in case of payment through bank, all bank charges shall be borne by supplier.

5.3 **SD:** Successful tenderer(s) shall have to furnish a Security Deposit equivalent to 3% (Three percent) value of the order by way of Demand Draft / Bank Guarantee (In CCI's format) in terms of Clause No. 2 of Part- II of the tender documents for satisfactory completion / performance of the contract. S.D will be refunded after successful completion of contract.

## **6.0 QUALITY:**

6.1 The supplier shall guarantee and confirm that the materials to be supplied are as per specifications and dimensions and as per Drawings as specified in the order. Material shall be free from any defects arising out of use of defective materials or any manufacturing or any other defects.

6.2 The supplier shall furnish test certificates of their laboratory and inspection report (MTC), if any. In case the material found defective, the supplier shall replace the material immediately at free of cost.

6.3 The chemical composition and tolerance the material will be governed by the relevant latest standard specification. Testing for chemical composition will also be governed by the relevant latest Indian Standard specification.

6.4 **Inspection:** at suppliers' site (all the expenses for inspection) shall be borne by the supplier.

## **7.0 ELIGIBILITY CRITERIA:**

**7.1 Suppliers those have experience to the supply of ropeway spares and accept our payment & delivery term shall be technically qualify for the further processing of tender. In any case the suppliers' delivery and payment term shall not be accepted by the Corporation.**

## **8.0 JURISDICTION:**

It is hereby agreed by the parties here that only the following Courts shall have Jurisdiction to decide or adjudicate upon any dispute which may arise out of or be in connection with the agreement:-

- i. Courts at Ponta Sahib / Shimla for contracts awarded for Rajban Unit.

**9. Inspection: at our site (CCI Rajban)**

**10. Paying Authority:** HOD (Fin), CCI Rajban

**11. Public Procurement (Preference to Make in India):**

11.1 The Procurement of goods and services under this tender will be regulated as per the applicable provisions of Public Procurement (Preference to Make in India), order 2017 of MoC&I (DIPP), Government of India and revised orders issued on 16.09.2020. As per said orders Bidders/Contractors are divided into three categories based on Local Content. Local content in the context of this policy is the total value of the item procured (excluding net domestic indirect taxes) minus the value of imported content in the item (including all customs duties) as a proportion of the total value, in percent.:

- a) 'Class-I Local Supplier' with local content equal to or more than 50%.
- b) 'Class-II Local Supplier' with local content equal to or more than 20%, but less than that applicable for Class-I Local Supplier.
- c) 'Non - Local Supplier' with local content less than that applicable for Class-II local Supplier, in (b) above.

The 'Class-I Local Supplier' / 'Class-II Local Supplier' at the time of bidding shall be required to indicate the percentage of local content and provide self-certification that the item offered meets the local content requirement for 'Class-I Local Supplier' / 'Class-II Local Supplier', as the case may be. Bids with false declarations regarding Local contents shall be rejected as unresponsive, in addition to punitive actions under the MII orders and for violating the Code of Integrity as per the Tender Document. Bidders have to submit self-declaration of their local content and their status as Class-I Local Supplier / Class-II Local Supplier and their eligibility to participate in this tender. If a Bidder is claiming exemption (as obtained from relevant authorities) from meeting the stipulated local content on account of manufacturing the product in India under a license from a foreign manufacturer with the precise phasing of increase in local content, he must provide proof thereof.

**11.2 Purchase preference as per Make in India will be exercised as follows:**

***(a) if the Goods are Not Divisible in nature***

Among all qualified bids, the lowest bid shall be termed as L-1. If L-1 is 'Class-I Local Supplier' (Under MII clause at 1.12.1), the contract shall be awarded to L-1.

If L-1 is not 'Class-I Local Supplier', the lowest bidder among the 'Class-I Local Supplier' shall be invited to match the L-1 price subject to Class-I Local Supplier's quoted price falling within the

margin of purchase preference, and the contract shall be awarded to such 'Class-I Local Supplier' subject to matching the L-1 price.

If such lowest eligible 'Class-I local Supplier' fails to match the L-1 price, the 'Class-I local Supplier' with the next higher and so on, bid within the margin of purchase preference shall be invited to match the L-1 price, and the contract shall be awarded accordingly. If none of the 'Class- I local Supplier' within the margin of purchase preference matches the L-1 price, the contract shall be awarded to the L-1 bidder.

**(b) if the Goods are Divisible in nature:**

Among all qualified bids, the lowest bid shall be termed as L-1.

If L-1 is 'Class-I local Supplier', the contract for full quantity shall be awarded to L-1. If the L-1 bid is not a 'Class-I local Supplier', 50% of the order quantity shall be awarded to L1. After that, the lowest bidder among the 'Class-I local Supplier' whose quoted price falls within the margin of purchase preference shall be invited to match the L-1 price for the remaining 50% quantity, and a contract for that quantity shall be awarded to him, subject to matching the L-1 price. In case such lowest eligible 'Class-I local Supplier' fails to match the L-1 price or accepts less than the offered quantity, the next higher 'Class-I local Supplier' within the margin of purchase preference shall be invited to match the L-1 price for the remaining quantity and so on, and the contract shall be awarded accordingly. If some quantity is still left uncovered on Class-I local Suppliers, such balance quantity shall also be ordered on the L-1 bidder.

**(c) Where contract is to be awarded to multiple bidders•**

In Bids where contracts are to be awarded to multiple bidders subject to matching of L-1 rates or otherwise, the 'Class-I Local Supplier' shall get purchase preference over 'Class-II Local Supplier' as well as 'Non-Local Supplier', as per following procedure:

If there is sufficient local capacity and competition for the item to be procured, as notified by the nodal Ministry, only Class I Local Suppliers shall be eligible to bid. As such, the multiple Contractors, who would be awarded the contract, should be all and only 'Class I Local Suppliers'.

In Bids, other than the sufficient local capacity and competition for the item to be procured, 'Class II local Suppliers' or both 'Class II local Suppliers' and 'Nonlocal Suppliers' may also participate in the tender process along with 'Class I Local Suppliers'.

If 'Class I Local Suppliers' qualify for the contract award for at least 50% of the tendered quantity in tender, the contract shall be awarded to all the qualified bidders as per award criteria stipulated in the Tender Documents. However, in case 'Class I Local Suppliers' do not qualify for the award of contract for at least 50% of the tendered quantity as per award criteria, purchase preference

should be given to the 'Class I local Supplier' over 'Class II Local Suppliers'/'Non-local Suppliers' provided that their quoted rate falls within the margin of purchase preference of the highest bid considered for award of contract. To ensure that the 'Class I Local Suppliers' taken in totality are considered for award of contract for at least 50% of the tendered quantity.

First purchase preference has to be given to the lowest among such eligible 'Class-I local Suppliers', subject to its meeting the prescribed criteria for the award of contract as also the constraint of the maximum quantity that can be sourced from any single Contractor. If the lowest among such 'Class-I local Suppliers' does not qualify for purchase preference because of aforesaid constraints or does not accept the offered quantity, an opportunity shall be given to next higher among such 'Class-I local Supplier', and so on.

To avoid any ambiguity during bid evaluation process, the procuring entity may stipulate its own tender specific criteria for award of contract amongst different bidders including the procedure for purchase preference to 'Class-I Local supplier' within the broad policy guidelines..

**12. Consignee:**

HOD (Materials & Management)  
Cement Corporation of India Ltd.  
Rajban Cement Factory



**CEMENT CORPORATION OF INDIA LIMITED**  
**(A Govt. of India Enterprises)**

**TECHNICAL BID**

Tender No.RCF/MM/204(23)

The specification of 1m<sup>3</sup> Bucket Assembly consisting of Bucket, Carriage body assembly, Traveling wheel assembly, Draw bar assembly, Side roller assembly, Jaw assembly & hangers are as follows:

Assembly should be consisting of:

S.NO	Description of Items	Drawing No.	Quantity
01	Supply of 1M <sup>3</sup> Bucket assembly consisting of bucket, carriage body assembly, traveling wheel assembly, Draw bar assembly, side roller assembly, jaw assembly & hangers.(Consisting of followings)	M 1214-167	20 Sets
I)	Carriage assembly.	M1214-162	
	a)Bucked 1 M <sup>3</sup>	M-1214-109-136-137,138	
	b) Carriage body assy.	M-1214-113(Revised)	
	c) Carriage suspension pin castle nut, washer, split pin duly hardened & tempered.	M-1214-03	
	d) Bogie frame (left):	M-1214-87	
	Bogie frame (right):	M-1214-88	
	e) Bogie pivot pin assy. With nylon bush, lock nut and washer	M-1214-76	
II)	Traveling wheel assy. Consisting of following:		
	a)Carriage wheel hub	M-1214-86	
	b) Traveling disc	M-1214-48	
	c) Carriage wheel spindle	M- 1214-4& 13	
	d) Nylon tyres	M-1214-01	
	e) Bearings 6305 ZR SKF		
	f) Oil seal 62x35x10		
	g) M.S. bolt with castle Nut	M1214-134	
III)	Draw bar Assembly. Consisting of	M1214- 43, 16, 37& 38	
	a) Complete side roller assy.	M1214-12,90,89,20	
	b) Complete jaw assy.	M1214-41 &39,40, 47	

	c) Hanger for carriage	M1214-107&18, 64,108,123.	
--	------------------------	---------------------------	--

Note:

1. Since these spares/ sub- assemblies are to be assembled at site for one assembly. Utmost care is to be taken for tolerances in machined parts/casted parts/ fabricated parts.
2. The inspection shall be done on suppliers' site and all the expenses for inspection shall be borne by the supplier.
3. Deliver Period: The supply has to be made in two phases (a lot of 10 buckets each). First lot within 12-16 weeks and second lot after three months of supply of first lot.
4. MTC or other test reports for all materials of bucket assembly is required from a government approved lab.

**HOD (MM)**

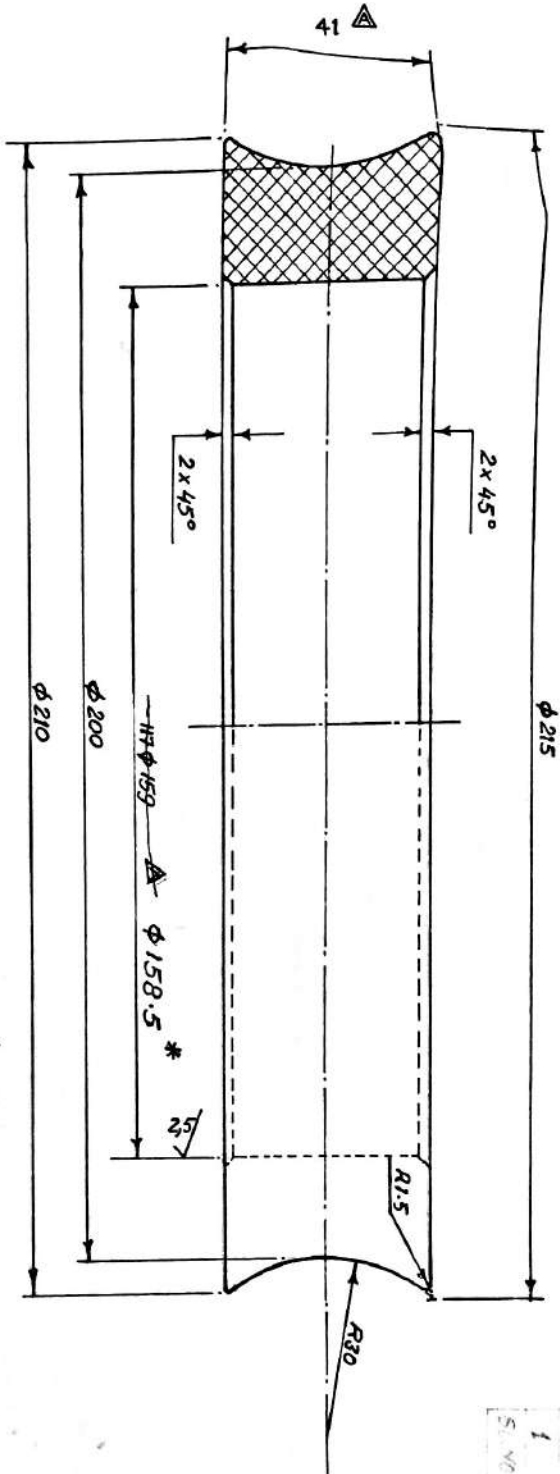
**CEMENT CORPORATION OF INDIA LIMITED**  
**(A Govt. of India Enterprises)**  
**PRICE – BID**

Tender No. RCF/MM/204(23)

Price Bid Date:

S. No.	Description of the items	Unit	Quantity Required	Rates (Inclusive freight up to CCI Rajban and inspection charges)	GST
1	1M <sup>3</sup> Bucket assembly consisting of bucket, carriage body assembly, traveling wheel assembly, Draw bar assembly, side roller assembly, jaw assembly & hangers as per technical bid (annexure-C)	Set	20		

**Note: L-1 shall only be decided on landed cost (item wise) FOR CCI, Rajban**



\* DIMENSION REVISED ON 25.11.86

1	C.R.D. 20550	C. C. J. RAJBAN	K. M. S. P.
2	DR. S. R. V.	P. S. R. H. S. E. P.	

NOTE:- THIS DRG TCD FROM JESSOP CO, LTD.

DRG. NO. W. 9.21.05-04 CALCUTTA

MATERIAL:- CAST NYLON (Gr. ANULON-116 OR EKV.)

CEMENT CORPORATION OF INDIA LTD  
RAJBAN

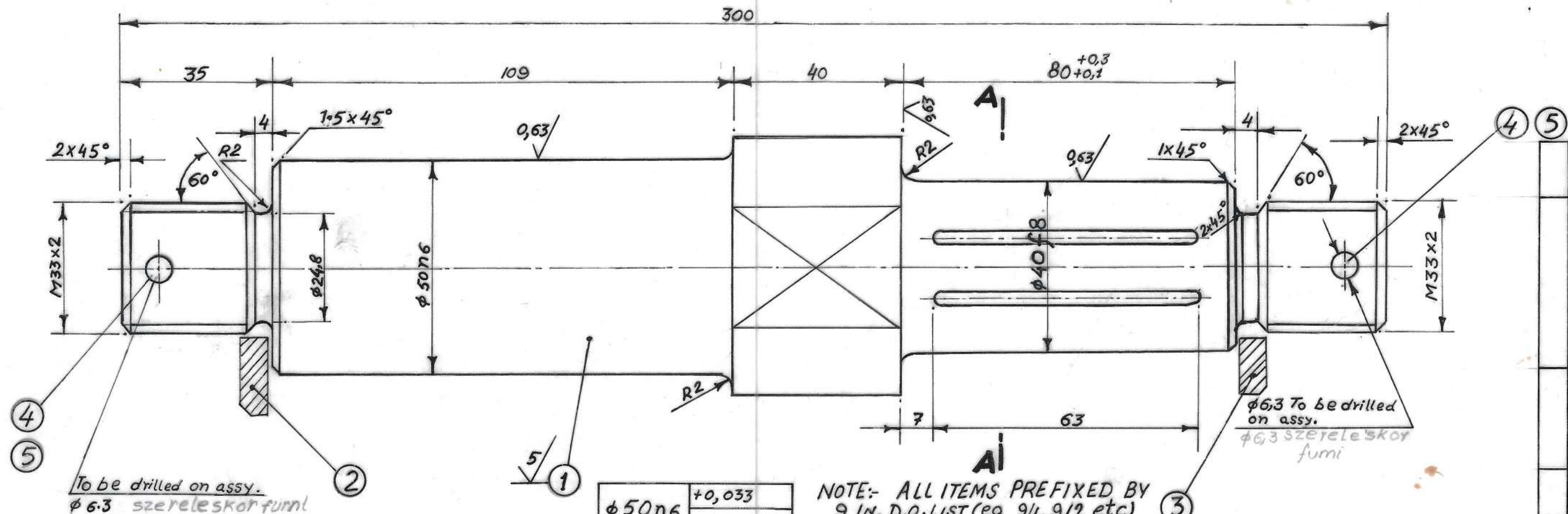
TCD.	M. R. B. 11-R-70	CARRIAGE WHEEL
CKD.	M. S. S. 11-R-70	TYRE.
APPD.	M. S. S. 11-R-70	
SCALE:-	1:1	DRG. NO. M-1214-1



00-60  
215.5K-3.10

NOTE:- This Drg. tcd, from "JESSOP CO. LTD. CALCUTTA."  
DRG NO. W 9.21.09-00 A  
R

REVISIONS			
MARK	DESCRIPTION	APPD.	DATE
△	SPECIFICATION OF ITEM NO 4 CHANGED	Nub	10/4/70

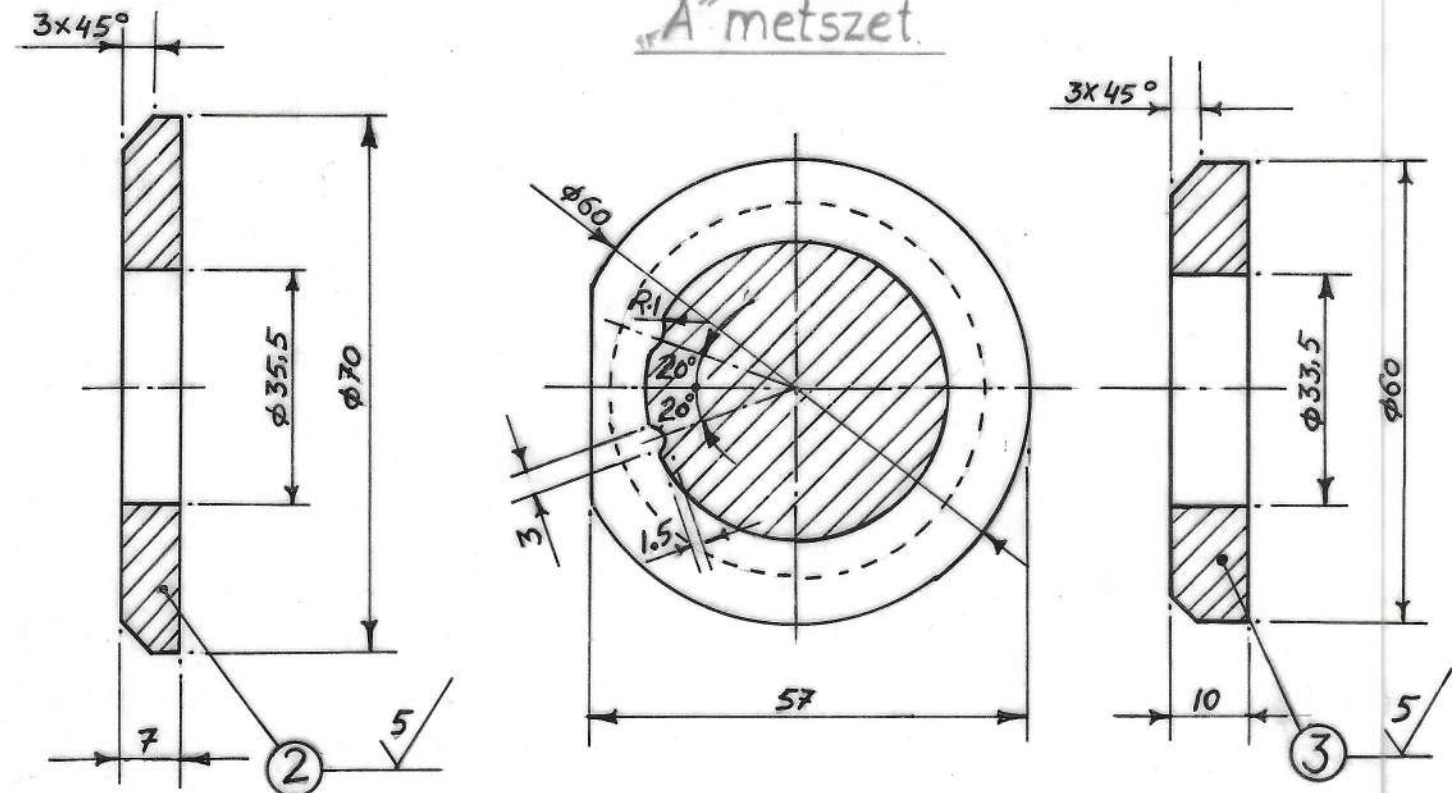


To be drilled on assy.  
φ6.3 szereleskor furni

φ50.n6	+0,033
	+0,017
φ40f8	-0,025
	-0,064

NOTE:- ALL ITEMS PREFIXED BY  
9 IN. D.O. LIST (eg 9/1, 9/2 etc)

Section "A"  
"A" metszet



ITEM Jel	N° of pcs db	DENOMINATION Megnevezés	DIMENSION Meret	MATERIAL Anyag	WEIGHT Súly	NOTE Tegyzel
5	2	SPLIT PIN 6.3 X 6.3. IS: 549 SASSZEG	φ6.3 X 6.3	A34 HG		
4	2	CASTLE NUT. M 33 X 2 (DIN 937) AL KORONAS anya Precision.	M 33 X 2	A5S	0,60.	
3	1	WASHER/ALATET	φ60 X 10	IS: 226 A 50		
2	1	WASHER ALATET	φ70 X 7	IS: 226 A 50	0,30	
1	1	ROUND STEEL KORACEL	φ60 X 300.	EN 8 A 50	3,5	

CEMENT CORPORATION OF INDIA LTD.  
RAJBAN

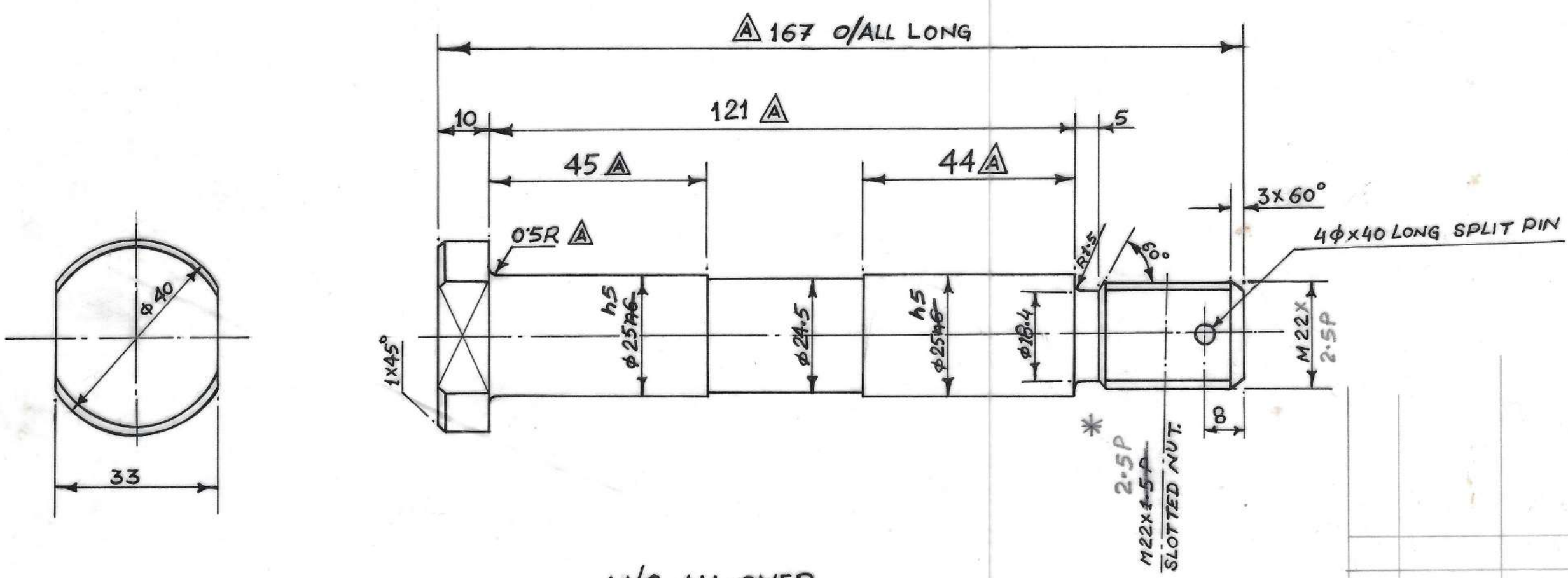
TCD.	4-9-79	Y.Bhargava	CARRIAGE SUSPENSION PIN Futómű tengely
CKD.		Ravishankar	
APPD.			
SCALE:- 1:1			DRG. No.- M-1214-3

REMARKS	PURCHASER	ORDER NO.
	C.C. I-RAJBAN	6AD7050



<del>φ25D6</del>	<del>+0.028</del>
<del>φ25H5</del>	<del>+0.015</del>
φ25H5	-0.00
	-0.09

*1/11/05*  
21/5/05



M/C ALL OVER

1	6RD7050	CC.I- RAJBAN	
SL.NO	ORDER NO	PURCHASER	REMARKS

NOTE: This Dwg. Tcd. from "JESSOP CO. LTD". DRG No.:- V 9.21.05-01 A

\* PITCH OF THREAD MODIFIED FROM 1.5 TO 2.5 P ON 17.01.03

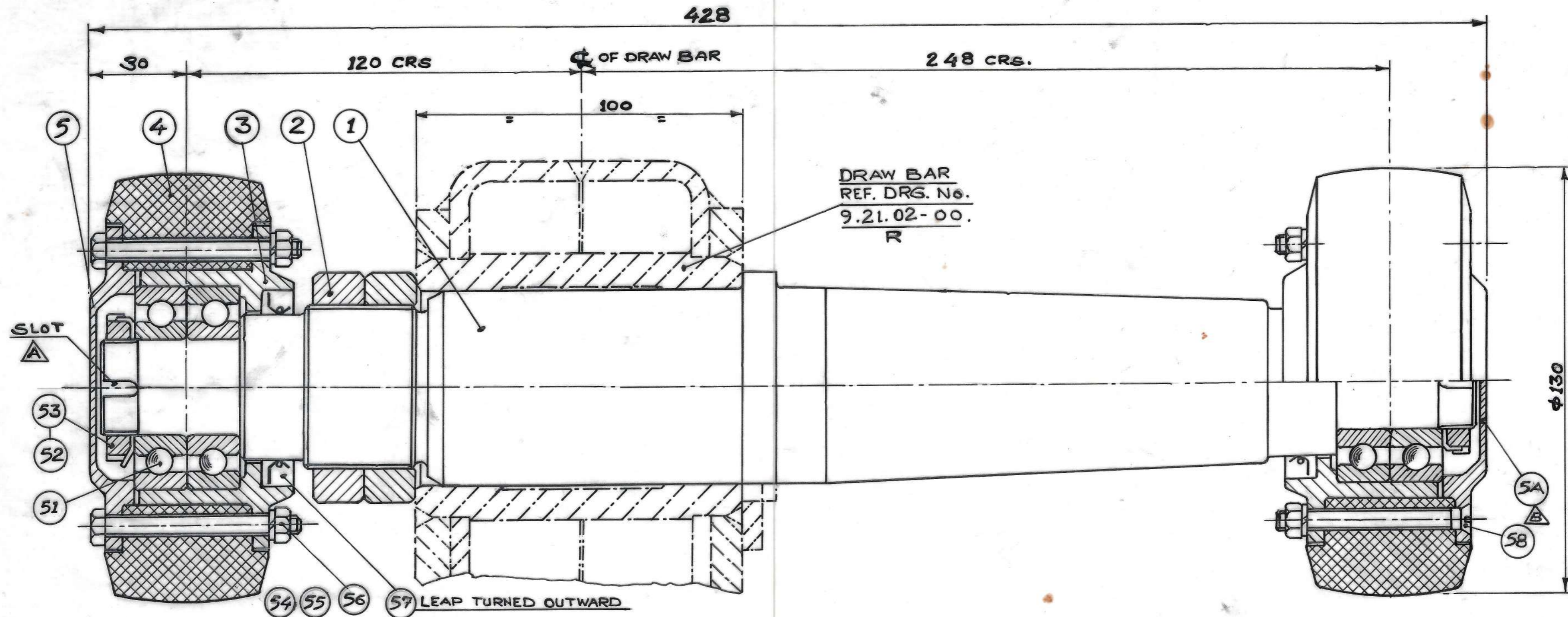
*1/11/03*

CEMENT CORPORATION OF INDIA LTD.  
RAJBAN (H.P)

A	DIMN. 44 WAS 42, DIMN. 45 WAS 43, DIMN. 121 WAS 117, DIMN. 167 WAS 163, & DIMN 0.5R WAS 1R.	24.2.76	<i>1/11/03</i>
	MARK	PARTICULARS REVISION	DATE APPD

TCD.	<i>Sharma</i>	CARRIAGE WHEEL SPINDLE	QTY
CKD.	<i>Raishma</i>		WEIGHT
PASSED	<i>Datta</i>	MATERIAL:- EN 8	DATE
APPD.	<i>Sharma</i>		SCALE:-1:1
			4-9-79





TOTAL WT / ASSY. = 11.00 KG (APPROX.)

58	6	IS:1365	C SK SCREW M6X 60 LG.	LP	0.100		
57	2	MIM 4560	OIL SEAL 45X60X10	LP.	-		
56	12	IS:1364	M.S. HEX. NUT. M-6	"	0.024		
55	12	IS:3063	M.S. SPRING WASHER M-6	"	0.005		
54	6	IS:1364	MS HEX. BOLT M-6X65 LG.	"	0.100		
53	2	SKF KM-6	LOCKING NUT	"	0.086		
52	2	SKF MB-6	LOCKING WASHER	"	0.016		
51	4	SKF6206	SINGLE ROW DEEP GROOVE BALL BRG.	"			
5A	1	IS:226	COVER.		.800	9.21.04.06/A R M1214-90	
5	1	IS:226	COVER		.800	9.21.04.06 R M1214-90	
4	2	NYLON	SIDE ROLLER LINING.		1.000	9.21.04.03 R M1214-20	
3	2	IS:226	SIDE ROLLER HUB.		1.500	9.21.04.04 R M1214-90	
2.	2.	IS:226	LOCKING NUT.		.500	9.21.04.02 R M1214-89	
1.	1.	EN. 8	SIDE ROLLER SHAFT		6.700	9.21.04.01/A R M1214-89	
SL. No.	No. PER ASSY.	MATERIAL.	DESCRIPTION.	SOURCE.	WT. IN KG.	REMARKS.	CCI. DRG.No.

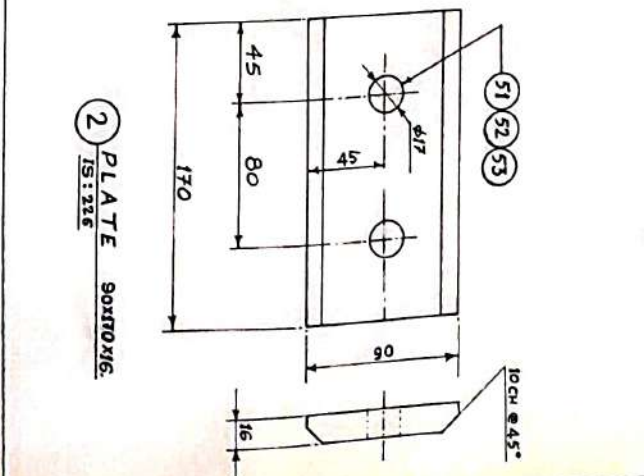
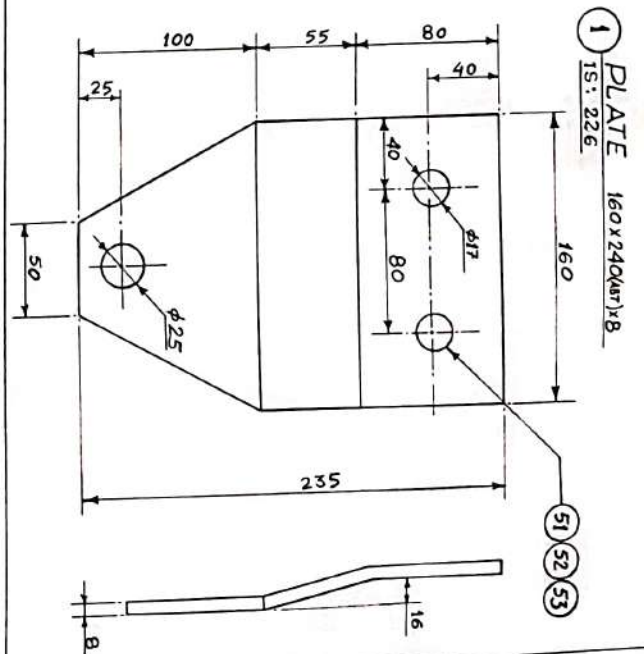
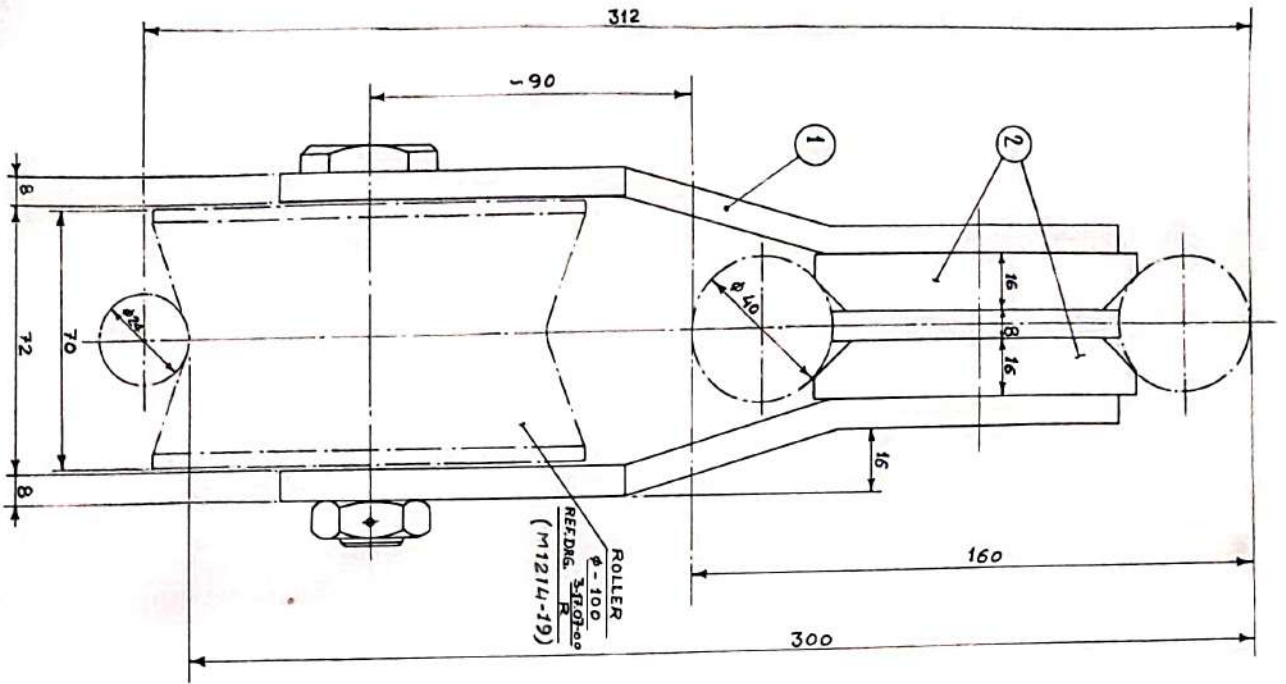
NOTE THIS DRG. IS TRACED FROM JESSOP DRG. NO. :- 9.21.04.00/B R

ALL DIMENSIONS ARE IN MM.

MATERIAL :-		QTY. :-
<b>CEMENT CORPORATION OF INDIA LTD.</b>		
<b>RAJBAN.</b>		
TRD.	9.8.79	Shrinivas
CHKD		Deva
APD		20/11/89
SCALE :- 1:1		DRG.No. :- M-1214-12

SIDE ROLLER ASSY





SLNO	NO PER ASSY	DESCRIPTION	MATL.	WT. IN KG.	REMARKS.
53	2	S PRING WASHER-B16	IS:3063	0.01	
52	2	HEX. NUT M-16	IS:1344	0.06	
51	2	HEX. BOLT M-KX75	IS:1344	0.36	

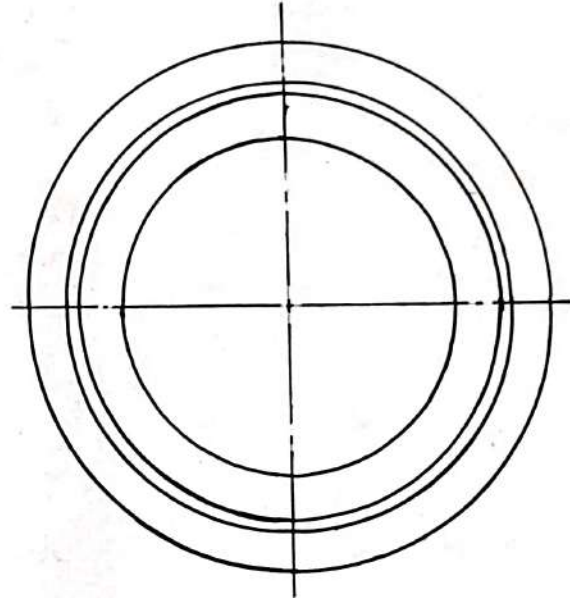
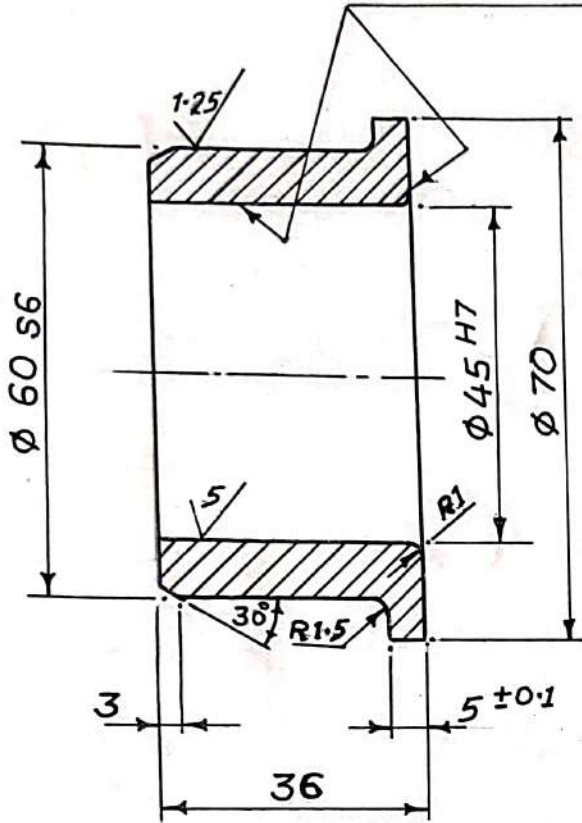
SLNO	NO. PER ASSY.	DESCRIPTION	MAT.	WT. IN KG.	REMARKS.
1	2	PLATE 160x240	IS:226	4.7	
2	2	PLATE 90x100	"	3.9	

TOTAL WT./ASSY. - 9.00 KG. (APPROX)  
 THIS DRG. IS TRACED FROM TESSOP DRG. NO. 3-IT-07-01

QTY. 28 SETS	
CEMENT CORPORATION OF INDIA LTD.	
RAJBAN.	
TCD.	BRACKET FOR GUIDE
CHKD.	ROLLER ASSY. $\phi$ - 100.
APPD.	
SCALE :- 1:2	DRG. No. :- M-1214 -13



BOTH MARKED SURFACES MUST BE HARDENED, MIN. 50 HRC.  
THE THICKNESS OF HARDNESS = 0.5 - 0.8 MM.



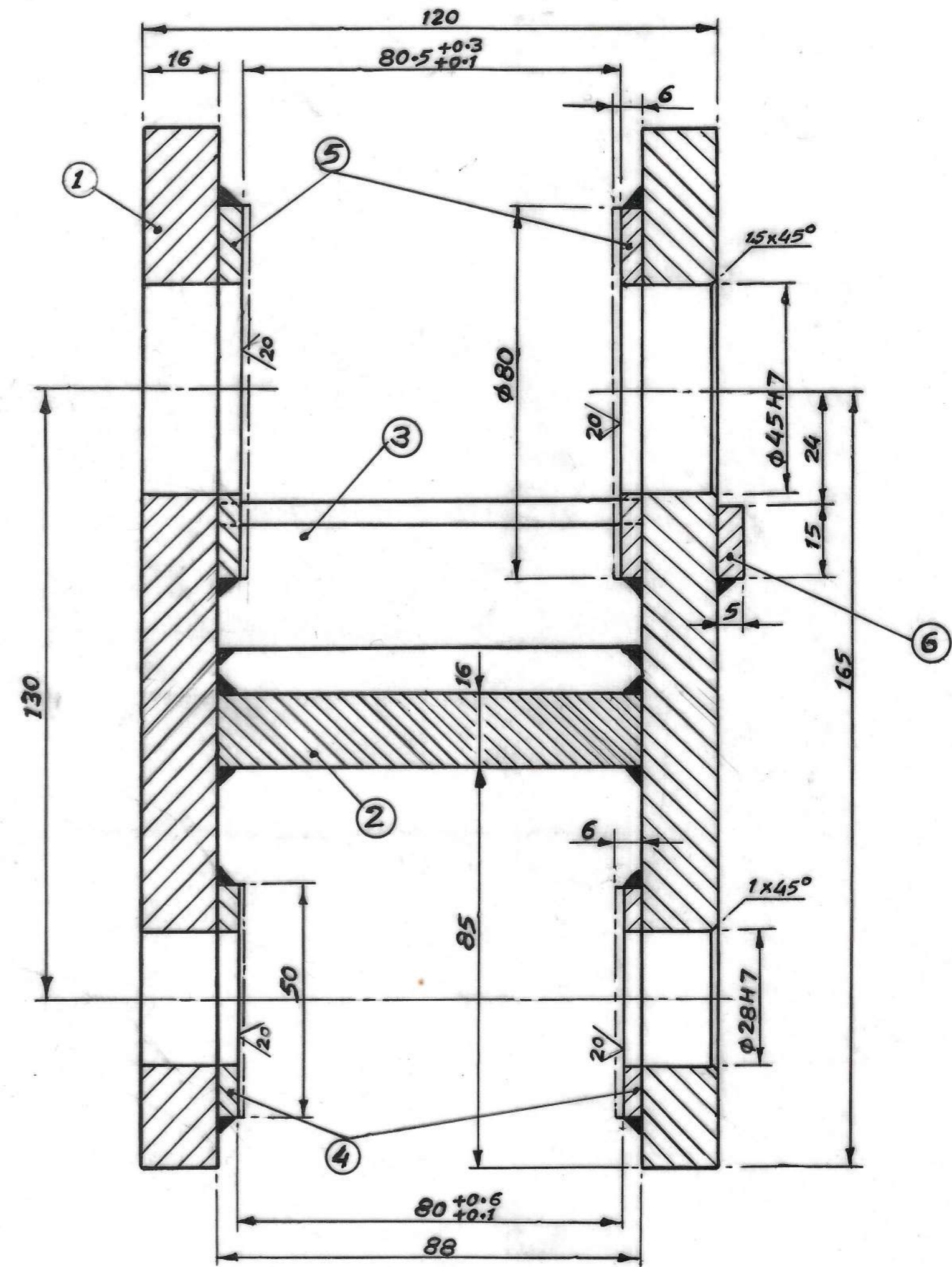
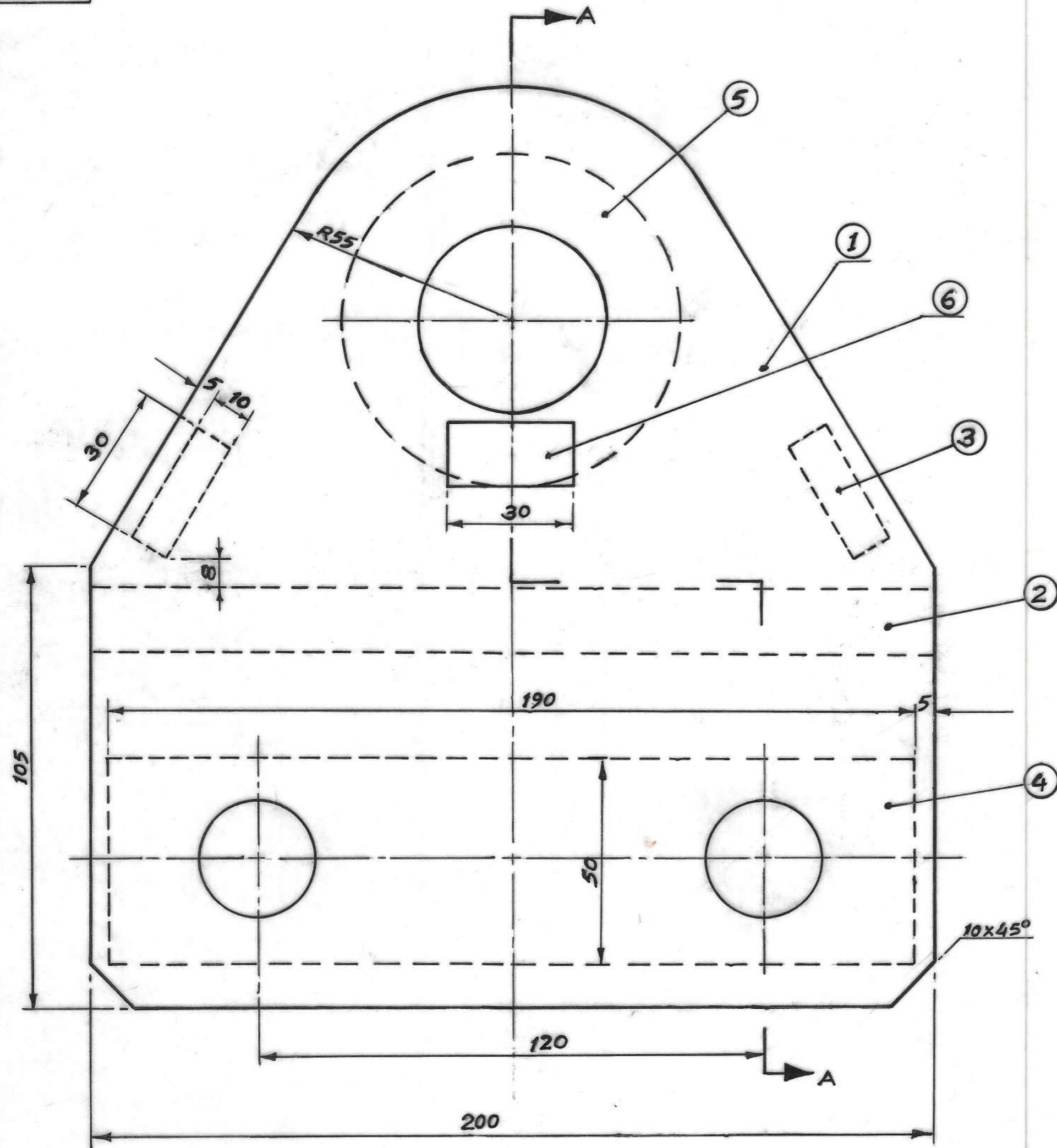
$\phi 45 H7$	+0.025
	0
$\phi 60 s6$	+0.072
	+0.053

DRG. IS TRACED FROM JESSOP'S DRG. NO. V  $\frac{9.21.02-03}{R}$  A

**CEMENT CORPORATION OF INDIA LTD**  
**RAJBAN HP.**

TRD.	<i>R. Bhal</i> 31/5/80	<u>Steel bush for</u> <u>Drawbar (Rope Way)</u>	QTY.	400 Nos.
CHD.	<i>Naresh</i>		WEIGHT	0.4 kg.
PSD.	<i>Naresh</i>			
APD.			Material- EN.36 B	
SCALE-1:1			DRG. NO.- M-1214-16	





All joints are continuous electric welded.  
 Size of weld a = 5 mm  
 Hegesztes. Δ 5-E

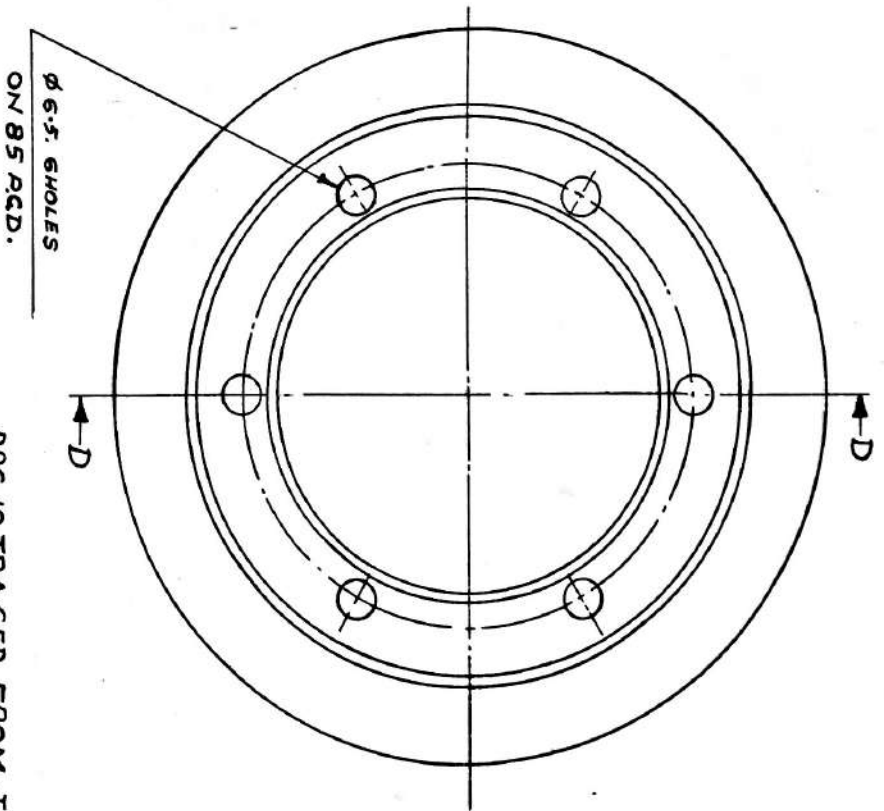
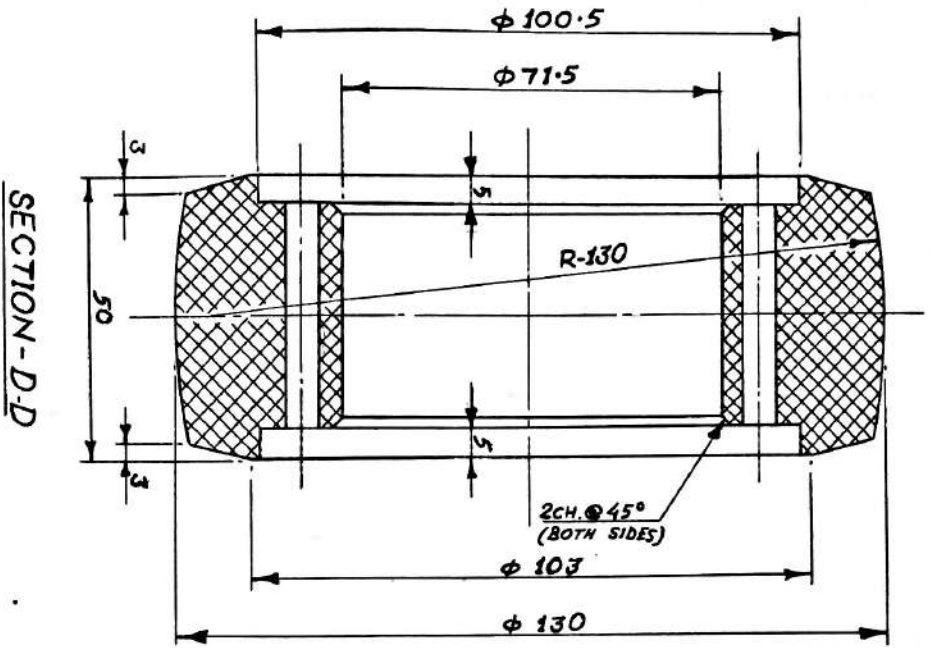
				Total Weight		1.6 kg		
				Usszuly				
28 H7	+0.021	6	1	Joke-plate	5x15x30	IS:226	0.02	
	0	5	2	Steel-block	φ80x6	IS:226	0.22	
45 H7	+0.025	4	2	Plate	6x50x190	IS:226	0.59	
	0	3	2	Plate	10x30x88	IS:226	0.415	
		2	1	Plate	16x88x200	IS:226	2.2	
		1	2	Plate	16x200x220	IS:226	4.15	
		Item	No. of	Denomination	Dimension	Material	Standard	Weight
		Fel	Pcs.	Megnevezés	Meret	Anyag	MSz	Súly
								Note
								Jegyzet

DRG. IS TRACED FROM JESSOP DRG. No.-86752  
 FOR ASSY. SEE DRG. No.-M-1214-107

**CEMENT CORPORATION OF INDIA LTD.**  
**RAJBAN H.P.**

TRD.	CHD.	PSD.	APD.	QTY.
<b>SUSPENSION FORK</b> (FOR CARRIAGE HANGER OF 1. CEMENT BUCKET)				WEIGHT
				REV.
SCALE- 1:1		DRG. No.-M-1214-18		





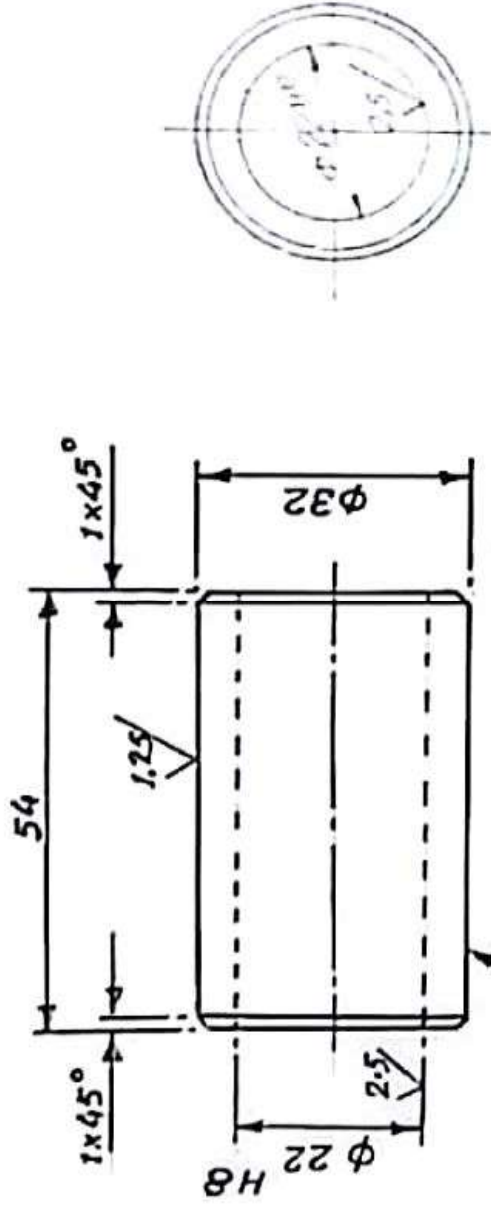
DRG. IS TRACED FROM JESSOP'S DRG. NO:-  
9.21.04-017006 & PART DRG. NO. - 9.21.04-03

CEMENT CORPORATION OF INDIA LTD.

RAJBAN HP.

TRD.	<i>Rajban HP</i>	SIDE ROLLER LINING (ROPE WAY)	QTY
CHD.	<i>Rajban</i>		2/SET
PSD.	<i>1.00</i>	MATERIAL - CAST NYLON	WEIGHT
APP.			1.00 KG.
SCALE-1:1	DRG. NO.-M-1214-20	REV.	

MATERIAL :- CAST NYLON, GR. ANNULON-116 OR EQUIVALENT



The marked surface must be hardened min 50HRC  
 The thickness of hardness 0.5-0.8mm.

Ø 22 H8	+0.035
	0

Drg. is traced from 'Jessop' Drg. no. 9-21.02-02

EN 36B  $\Delta$

ITEM	No of PCS	DENOMINATION	DIMENSION	MATERIAL	WEIGHT	NOTE
1	1	Round steel	Ø 32 x 54	Any one	0.20	Material Study

CEMENT CORPORATION OF INDIA LTD.

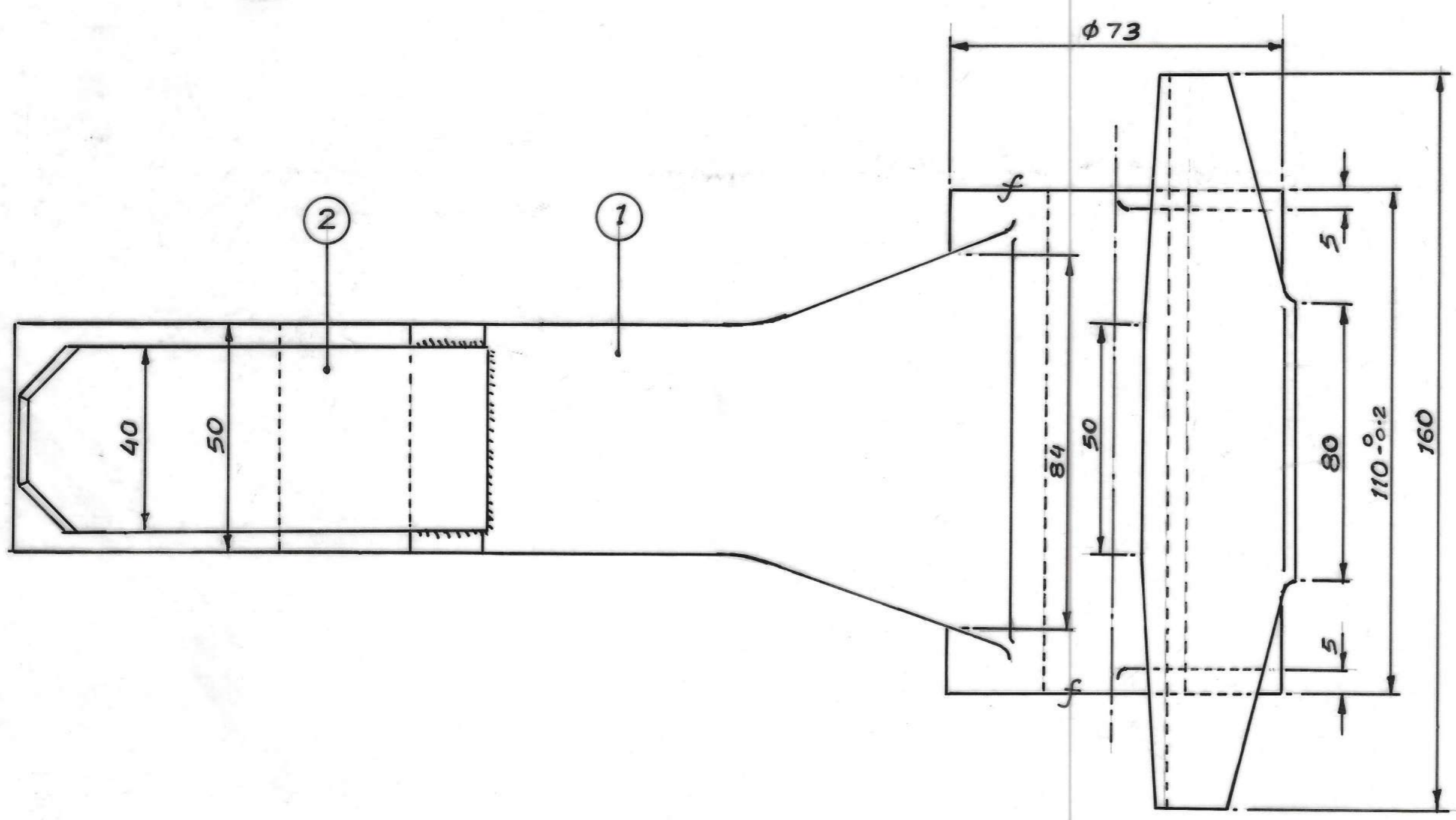
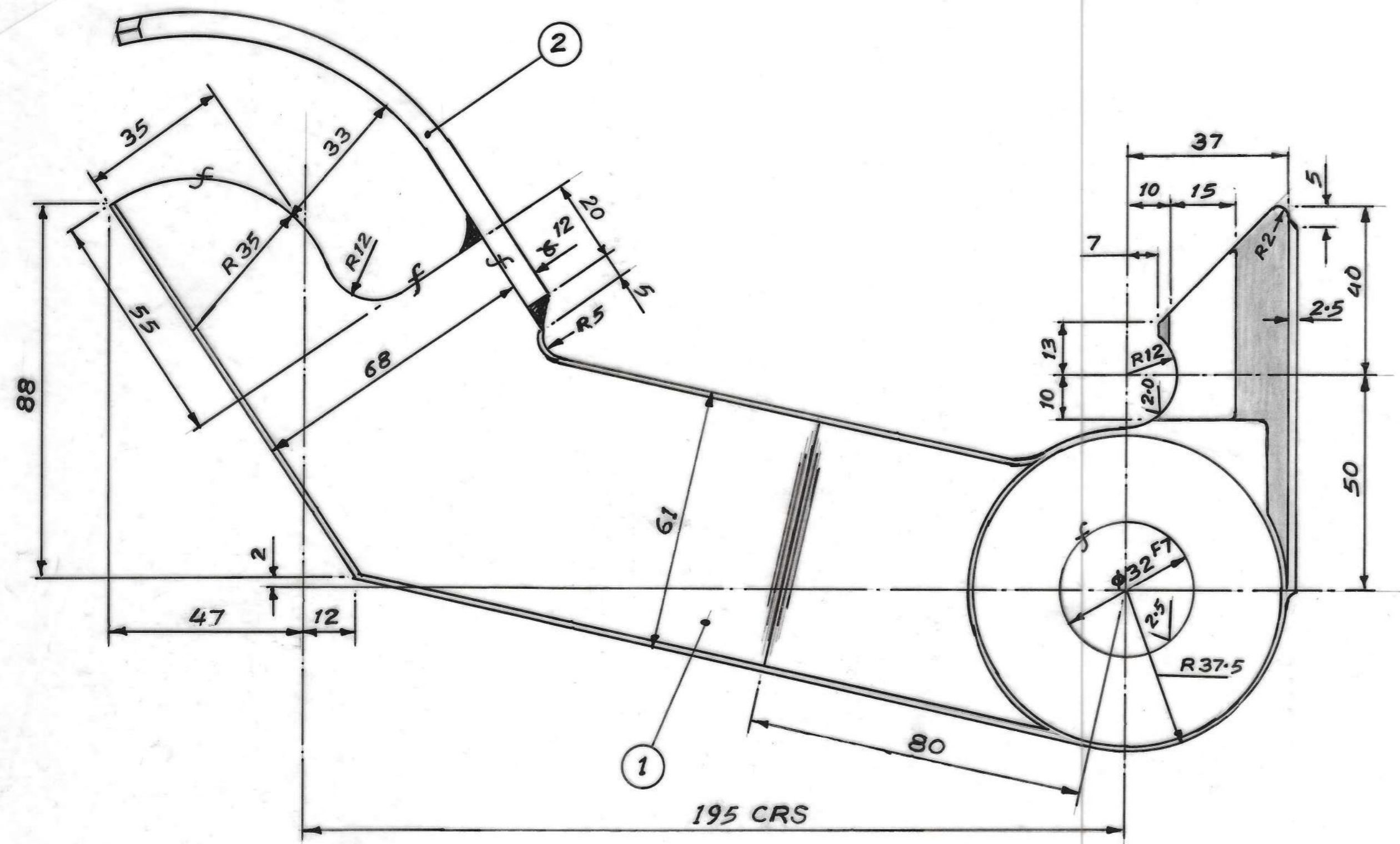
RAJBAN (HP)

TRD.	CHD.	PSD.	APP.	QTY.	WEIGHT
Ø 32	1.25	2.5		1. No.	0.20 kg
ROLLER (ROPEWAY)					
Material - EN-36 B					





$\phi 32 F7$	+0.050
	+0.025



NOTE:- DRG. IS RE-TRACED ON 3.6.05 FROM JESSOP  
 DRG.No.-Y 9-21.03-02  
 R C

ITEM	No. OF Pcs.	DENOMINATION	DIMENSION	MATERIAL	WEIGHT
2	1	PLATE	40x12-125	IS:2062	0.24
1	1	PRESSURE ARM	160x130x300	IS:1030 GR-2	9.76

CEMENT CORPORATION OF INDIA LTD.  
 RAJBAN (HP)

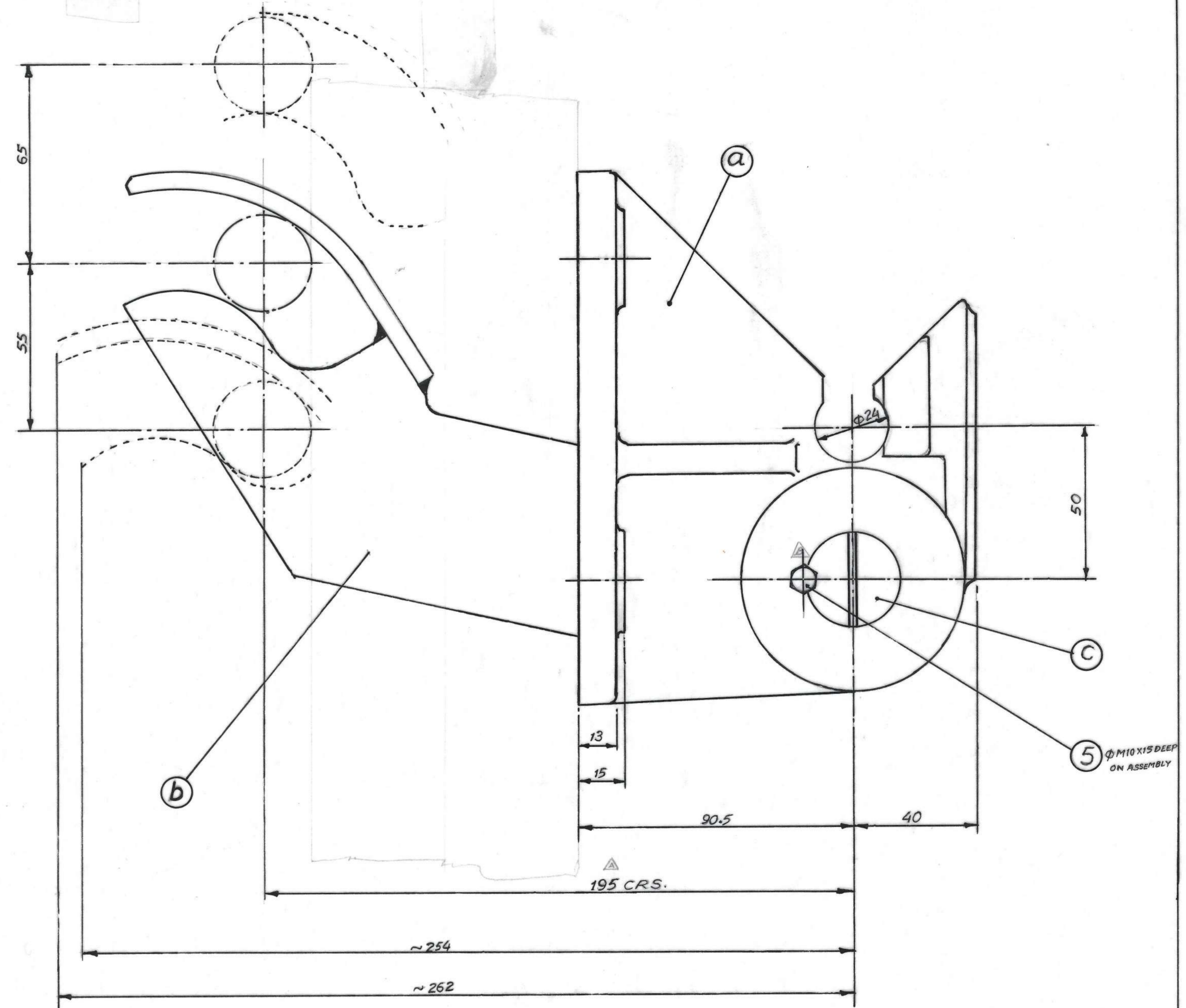
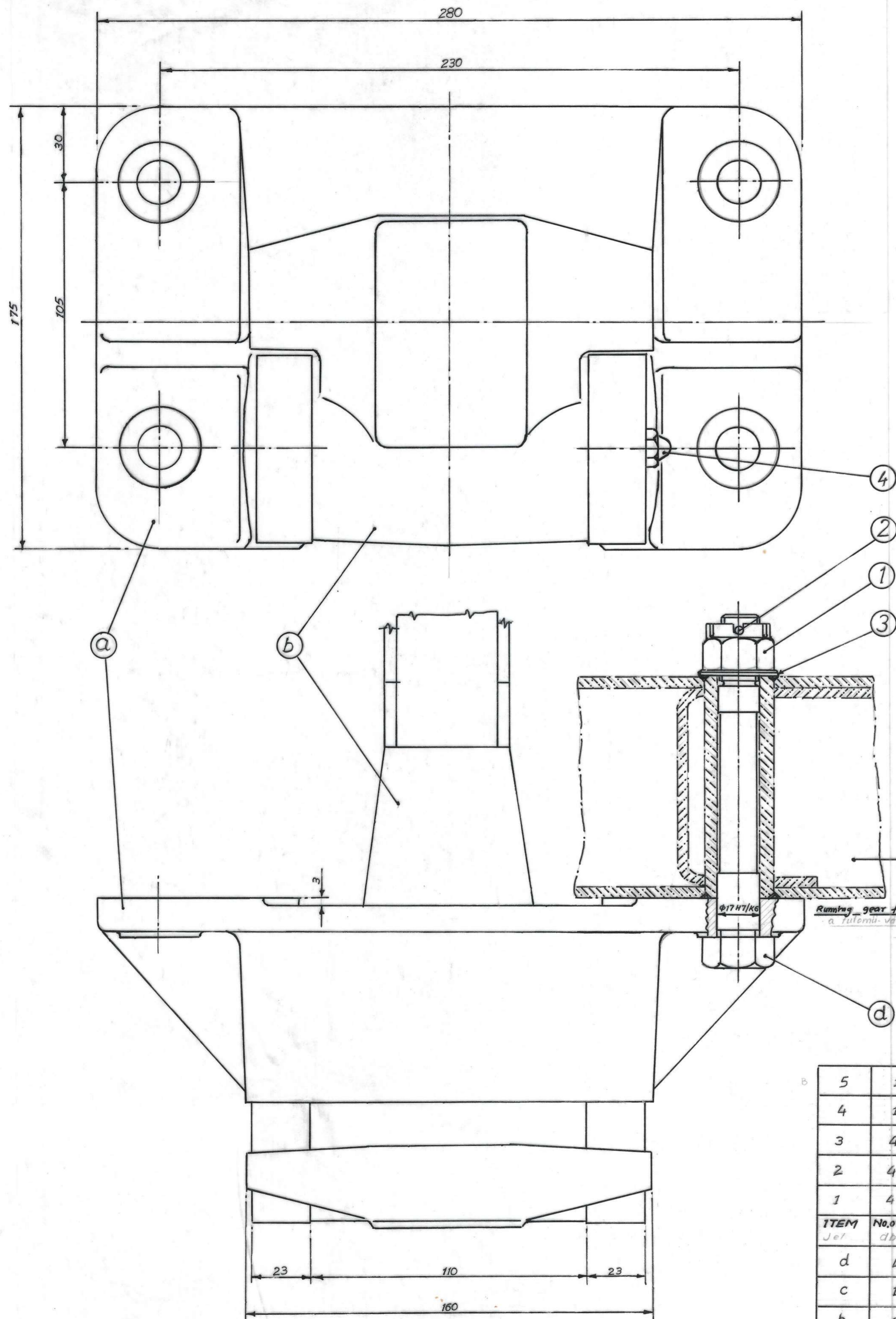
TRD.	<i>[Signature]</i> 24/9/05	MOVABLE JAW FOR	
CHD.	<i>[Signature]</i> 20/9/05	ROPEWAY.	
PSD.			
APD.			
SCALE-1:1		DRG. No.-M1214-39	







215-5K-3-10  
03-00



running gear frame  
futornu vaz

running gear frame and fixed clamping part must be bored and rubbed together  
a futornu vaz az kapcsolóeszközök álló rész egyutt  
fúrva és dorzsolva

NOTE:

ALL ITEMS PREFIXED BY 3  
IN D.O. LIST (eg. 3/1, 3/2 etc.)

B	HEX HEADED SCREW M10X12 LONG WAS SLOTTED C'SK HEAD SCREW.
A	DIMN. 195 CRS APPROVED.
MARK	PARTICULARS
	REVISIONS

Drq. is traced from Jessop Drq. no. 9-21-03-00  
R

φ17H7	+0.018
	0.0
φ17k6	+0.012
	+0.001

ITEM	No. of Pcs.	DENOMINATION	DIMENSION	MATERIAL	Weight	
Ue/	db	Megnevezés	Méret	Anyag	Súly	
5	1	Hex. Hd. Screw M10x12 Long Hexfejcsavar 15.1364	M10x12	5 S	0.004	Total Weight=19 Kg.
4	1	Grease Nipple Golyós zsírozógomb	M10x1		0.008	
3	4	Finished Washer 17 IS:2016 Fémes	M 16	0A	0.046	
2	4	Split Pin 4x36 IS:549 Szásszeg olajtű	4x36	A34 Hs	0.014	
1	4	Castle Nut M16 IS:2232 Precision Koronás fényes anya	M 16	5 S	0.25	
d	4	Fitted Bolt (Dowel Bolt) Heszteff Gevor	215-5K-3-10 03-04		9-21-03-04 R	M 1214-47
c	1	Hinge Pin Fengely	215-5K-3-10 03-03		9-21-03-03 R	M 1214-42
b	1	Movable Jaw Szorítókar	215-5K-3-10 03-02	10.0 Kg	9-21-03-02 R	M 1214-39
a	1	Fixed Jaw Kapcs	215-5K-3-10 03-01	6.70 Kg	9-21-03-01 R	M 1214-40
ITEM	No. of Pcs.	DENOMINATION	DRG. NUMBER	WEIGHT	NOTE	
Ue/	db	Megnevezés	Rejzszám	Súly	Jegyzet	

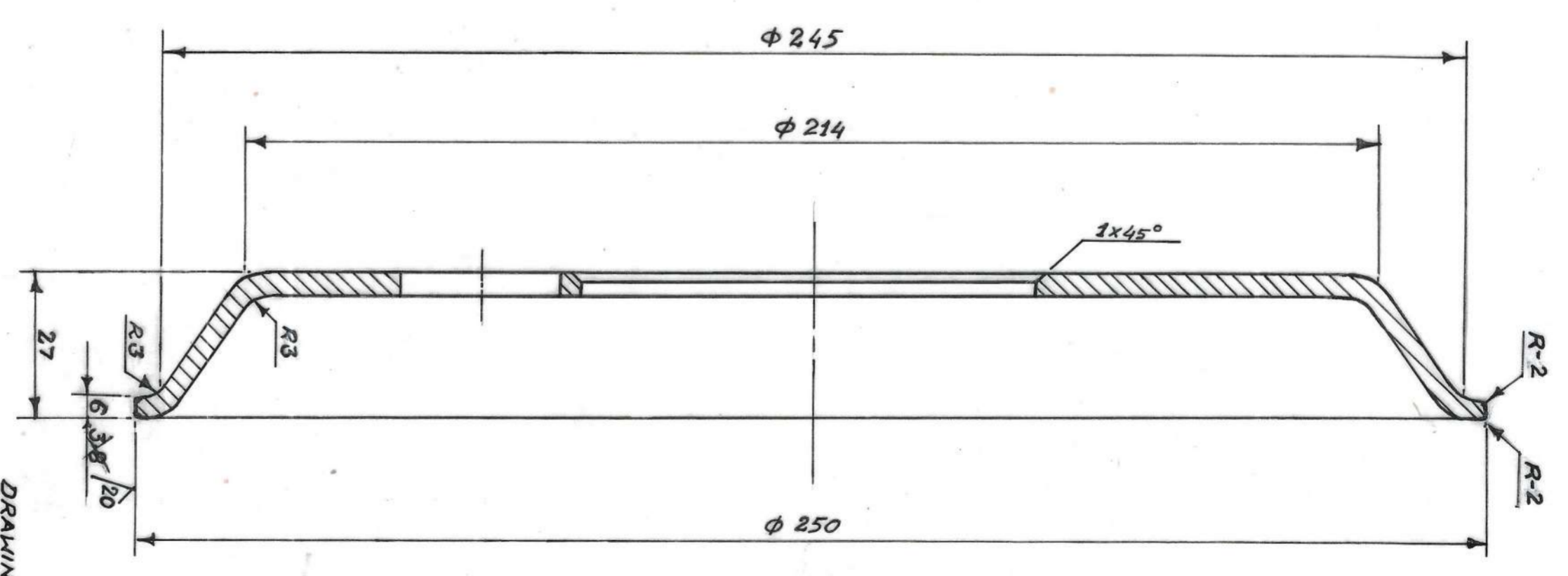
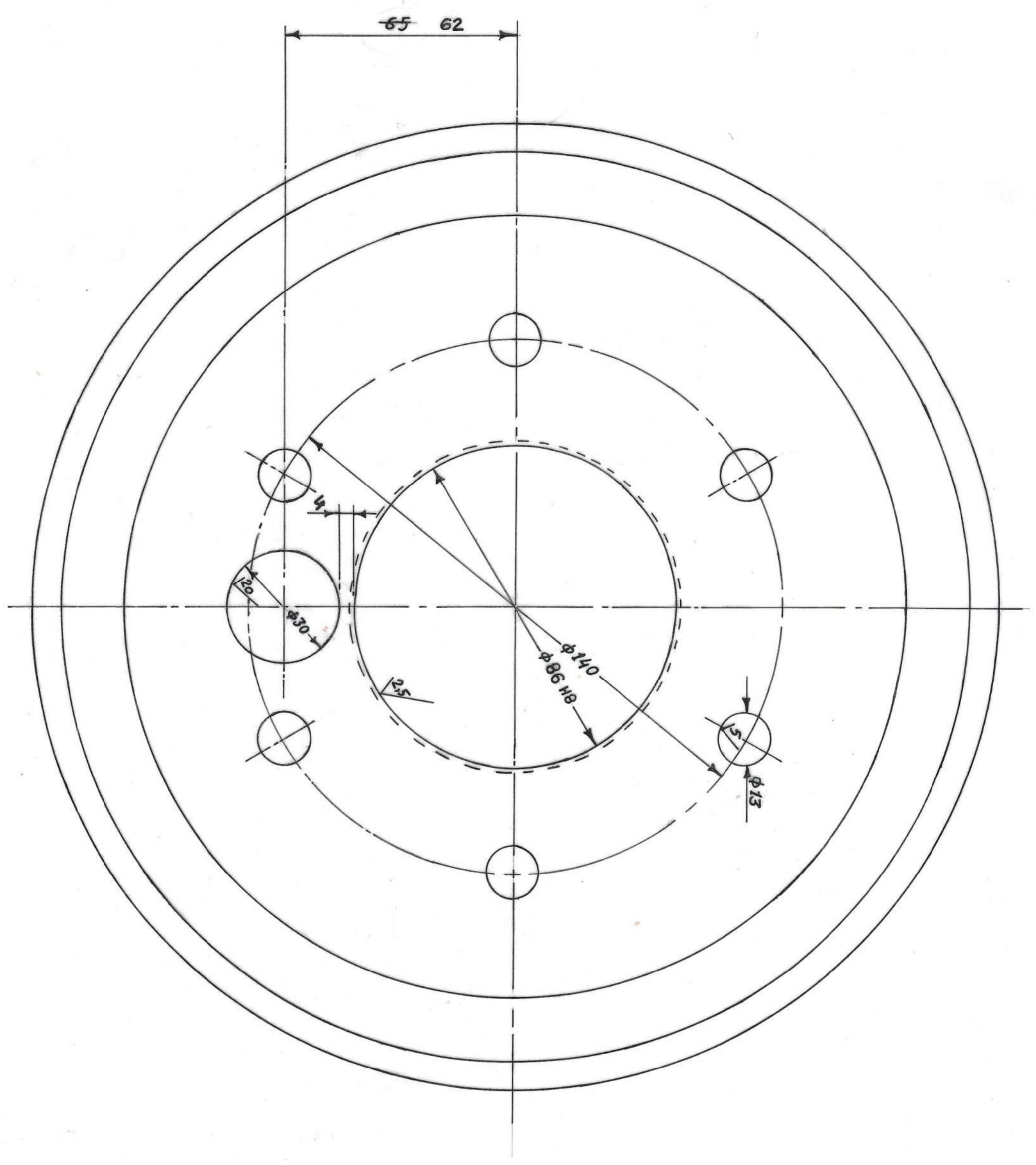
CEMENT CORPORATION OF INDIA LTD.			
RAJBAN (HP)			
TRD.	R. S. S. S.	JAW ASSEMBLY FOR ROPE φ 24	QTY
CHD.	R. S. S. S.		WEIGHT
PSD.	R. S. S. S.		19 Kg.
APD.	R. S. S. S.		REV
Scale-1:1	Drq. No.- M 1214-41	CCI DRG.No.	











DRAWING IS TRACED FROM JESSOP DRG NO-9-21.05.03

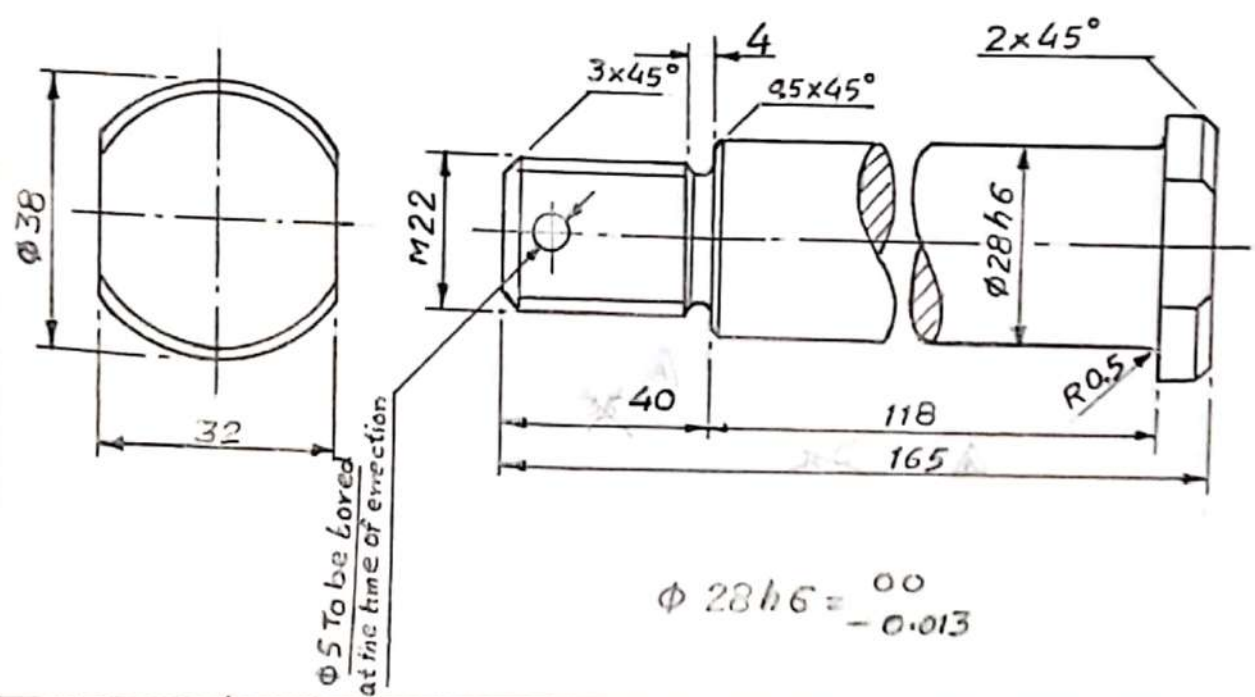
DIMENSION 3.8, Changed to 6.0mm on 13.9.88

CEMENT CORPORATION OF INDIA LTD.  
RAJBAN.HP.

QTY	1. No.	4-70
WEIGHT	2.7 Kg.	REV
TRD.	Checked	TRAVELLING DISC.
CHD.	Reviewed	(ROPE WAY)
PSD.	Value	
APPD.		Material- IS: 513, GR-D, M2P
Scale: 1:1		DRG. No. - M-1214 - 48
φ86H8	+0.054	0



Sl. No.	ORDER NO.	NAME OF THE ORDER
1	2RD7001	CLT BOKA...
2	5RD7032	CLT RAJAN...

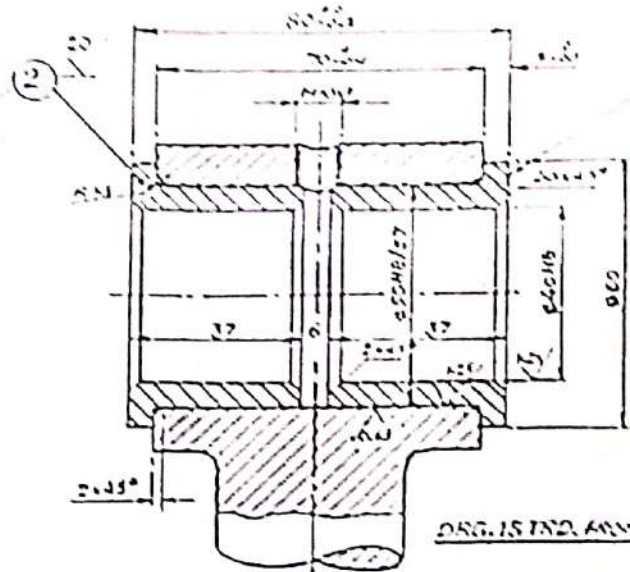
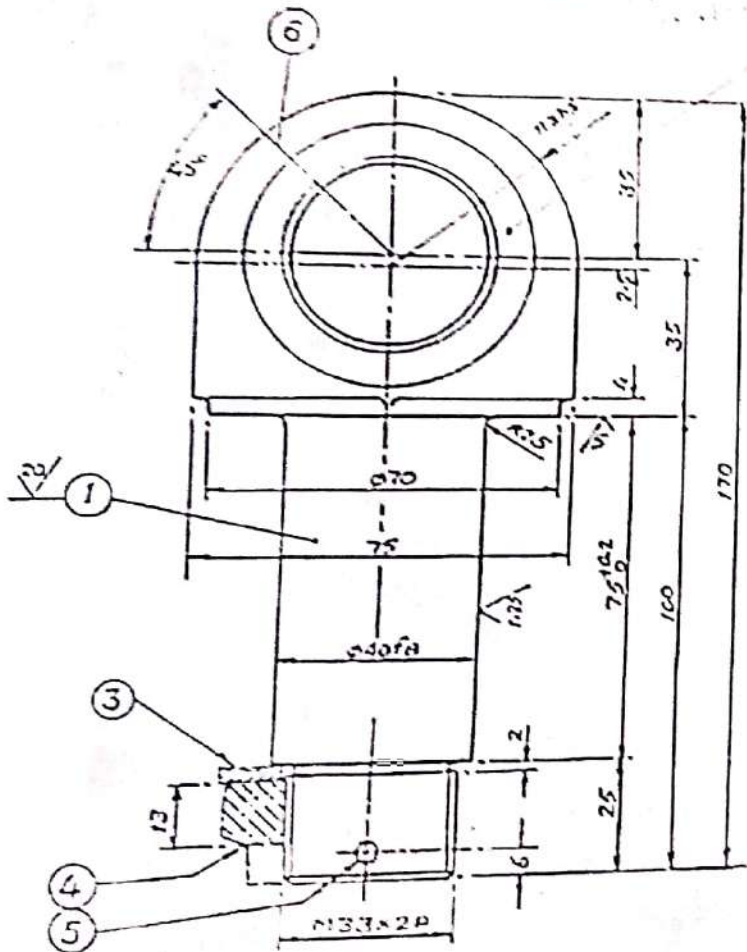


Item	No of Pcs	Denomination	Dimension	Material Standard	Weight	En-8 HT-40T Note
1	1	Yake Pin	$\phi 38 \times 165$	EN8 HT-40T EN9	0.77	En-8 HT-40T

DRG. TRD. FROM 'JESSOP' DRG. No. 86753A

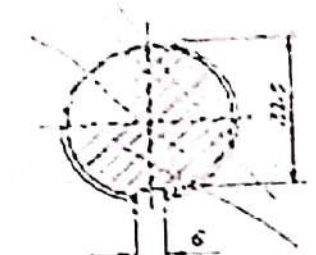
CEMENT CORPORATION, JESSOP & CO. LTD.	
RAJAN...	
TRD.	<b>YAKE - PIN</b> (FOR CARRIAGE HANGER)  MAT. :- EN-8 HT-40T  SCALE 1:1    DRG. No. :- M1214-64
CHD.	
PSD.	
APD.	

NOTE:- THREADED PORTION & ITS FITTINGS  
MODIFIED ON 17.6.58 (REV. A)



DRG. NO. M1214-76

SCALE 5:1

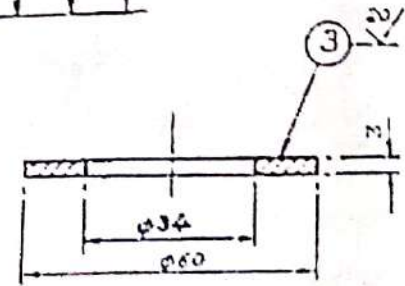


DRG. IS IND. APP. (ISSUED) DRAWING NO. M1214-76 A

TOTAL QUANTITY

ITEM	NO. OF PCS.	DENOMINATION	DIMENSION	MATERIAL	ASST
6	1	GREASE NOZZLE	1 UNIT		
5	1	SPLIT PIN (45)	00	MS	0.05
4	1	CASTLE NUT	M33x2	MS	
3	1	WASHER	φ50x3	MS	0.07
2	2	BUSH	φ60x37	STAINLESS-STEEL	0.55
1	1	PIVOT PIN	M33x100	MS	2.65

φ40F8	-0.025
	-0.050
φ40H8	+0.039
	0
φ50H8	+0.039
	0
φ50H7	+0.050
	+0.040



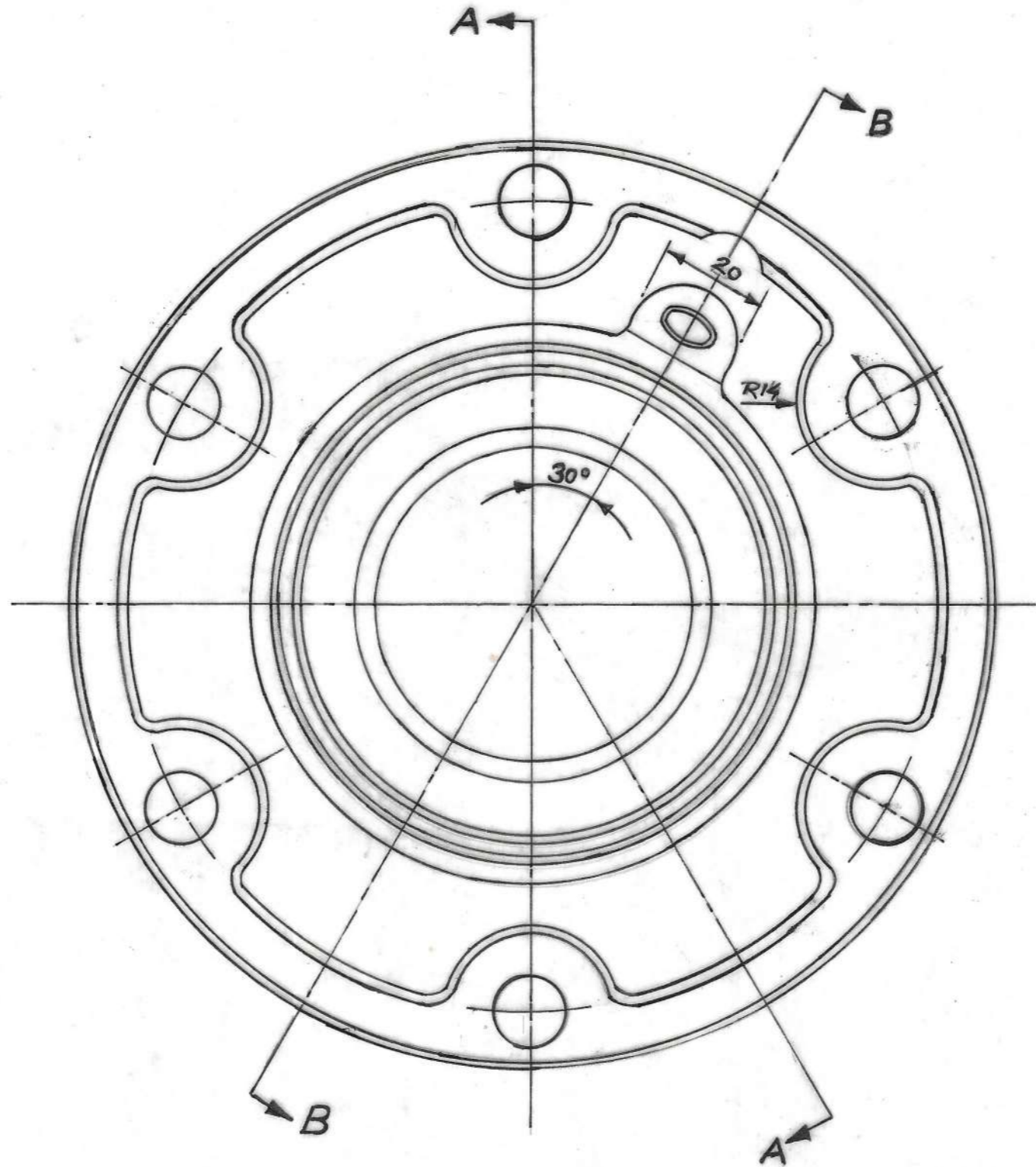
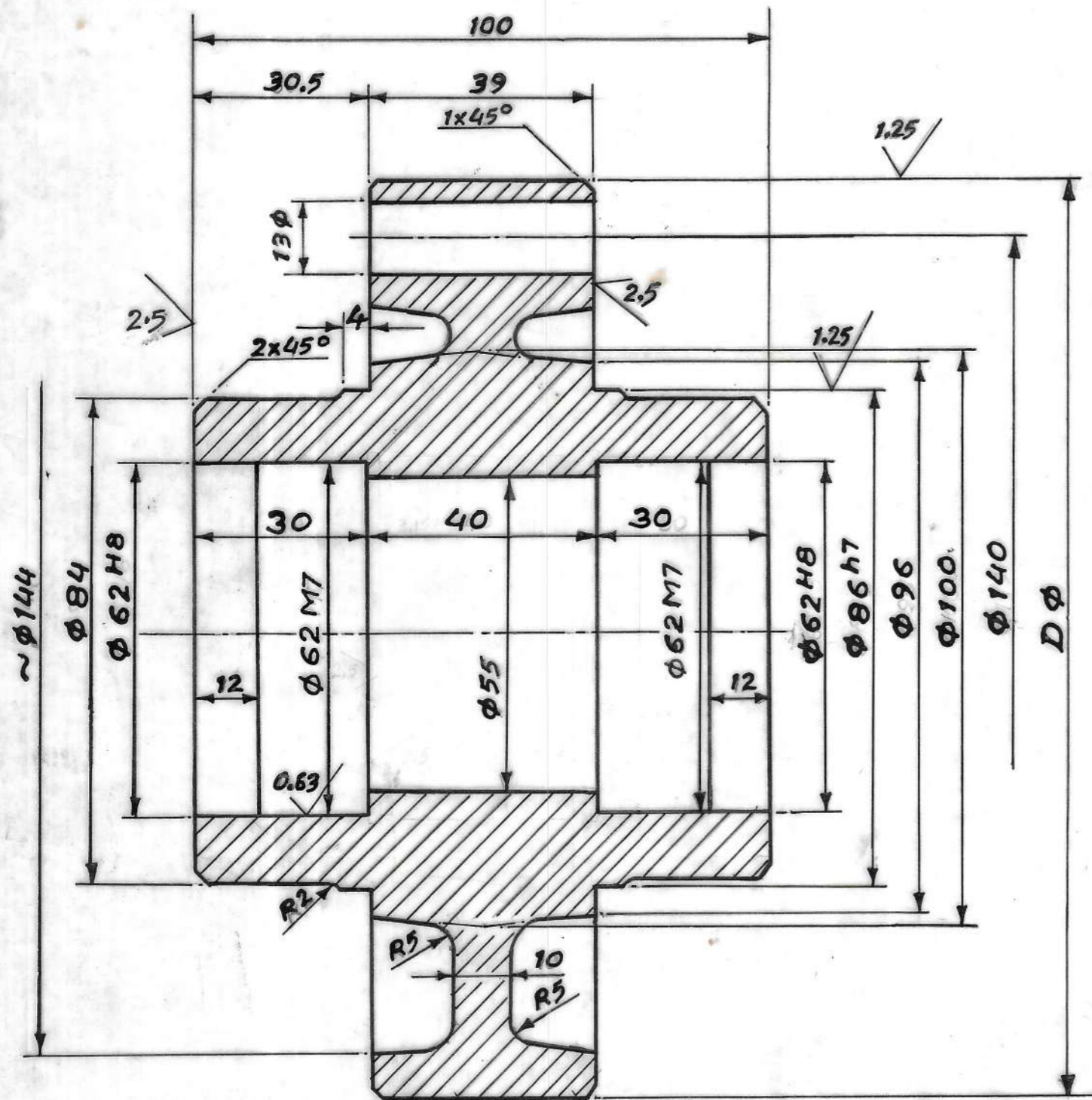
CEMENT CORPORATION OF INDIA LTD.  
RAJARAN (HP)

TRD.		
CHD.		
PSD.		
APP.		
Scale-1:1	DRG. No. M1214-76	REV. A

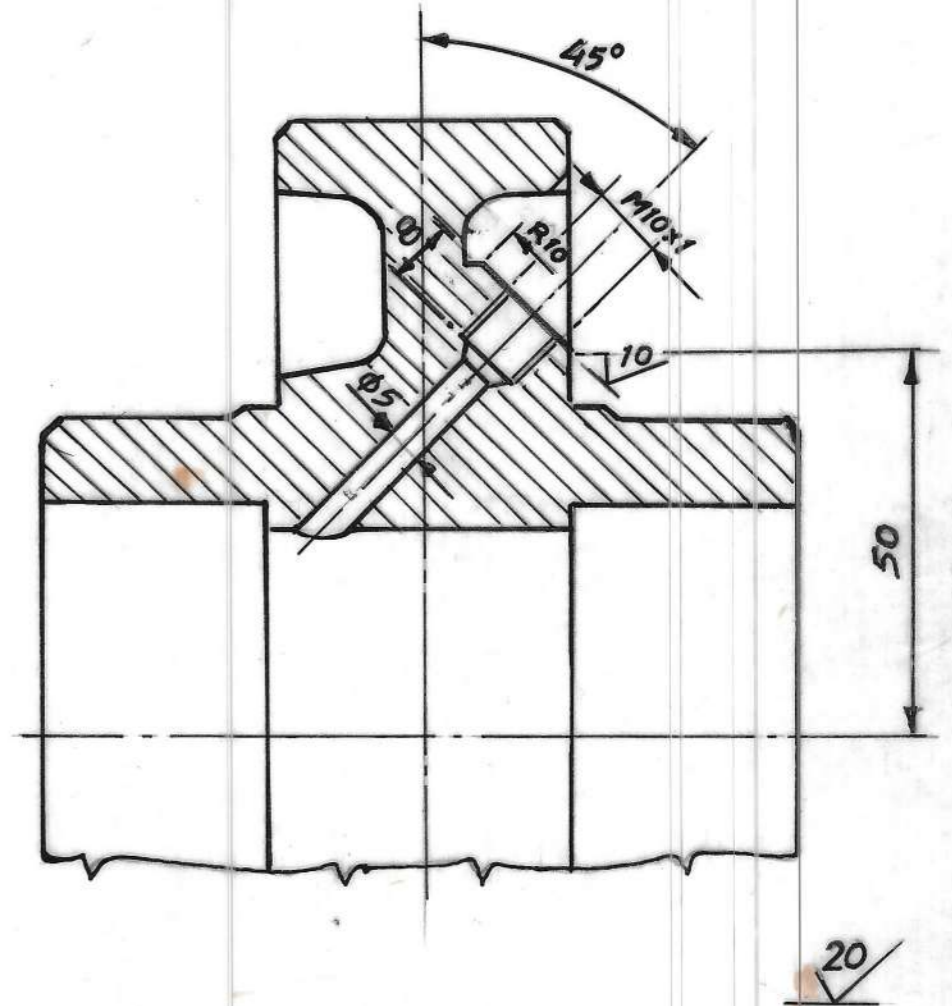


215-5K-3-10  
05-02

Section "A"



Section "B"



DRG. IS TRACED FROM 'JESSOP' DRG. No. - w 9-21-05-02  
R

CEMENT CORPORATION OF INDIA LTD.  
RAJBAN (HP)

TRD.	<i>[Signature]</i>	CARRIAGE WHEEL HUB	QTY
CHD.	<i>[Signature]</i>		1 NO.
PSD.	<i>[Signature]</i>		WEIGHT
APD		Material- 15-210 GR.35	4-60
Scale- 1:1		DRG.No.-M-1214-86	REV
			1

REV:- 1) CIRCLIP GROOVES OMITTED.  
ii) φ 55 WAS φ 64  
iii) Dφ DIMENSION 161 p6 ADDED

φ160 p6	+0.068 +0.043		
φ86 h7	0 -0.035		
φ62 H8	+0.046 0	Dφ	160 p6
φ62 M7	0 -0.030		161 p6 +0.068 +0.043

*[Handwritten note]*  
16.5 58





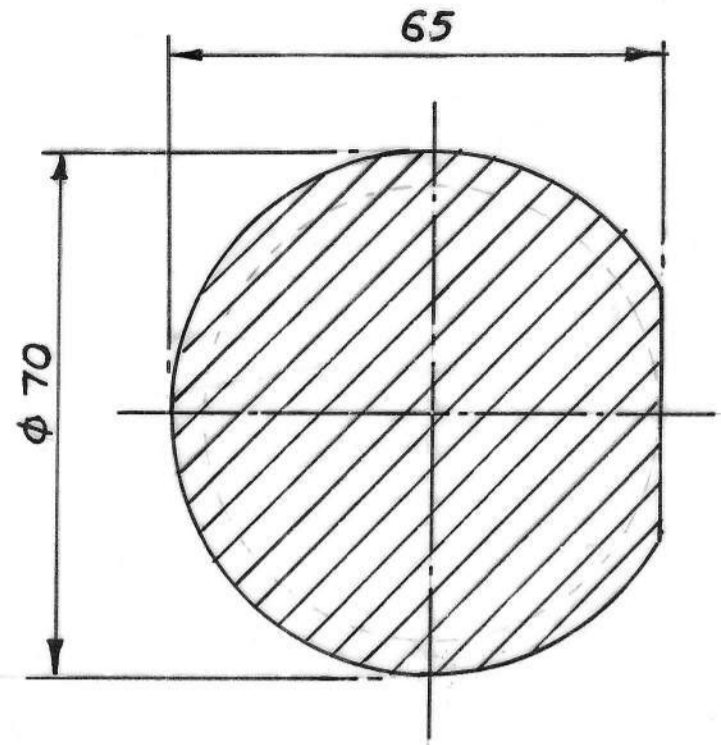




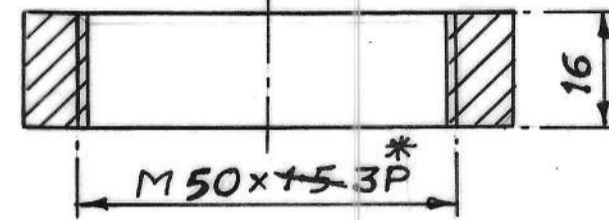
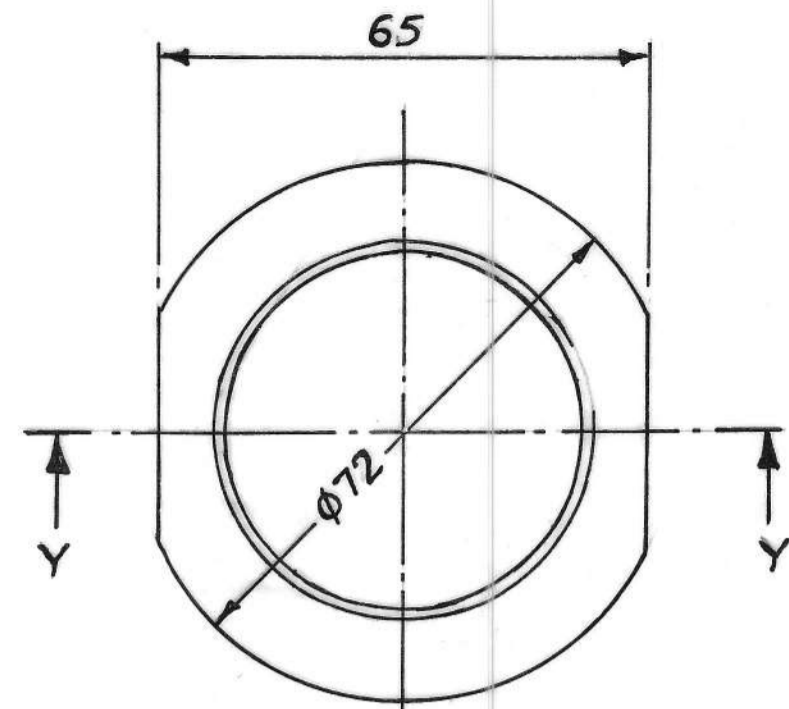


$\phi 60k6$	+0.021
	+0.002
$\phi 30g6$	-0.007
	-0.020

TOLERANCE TABLE



SECTION 'XX'

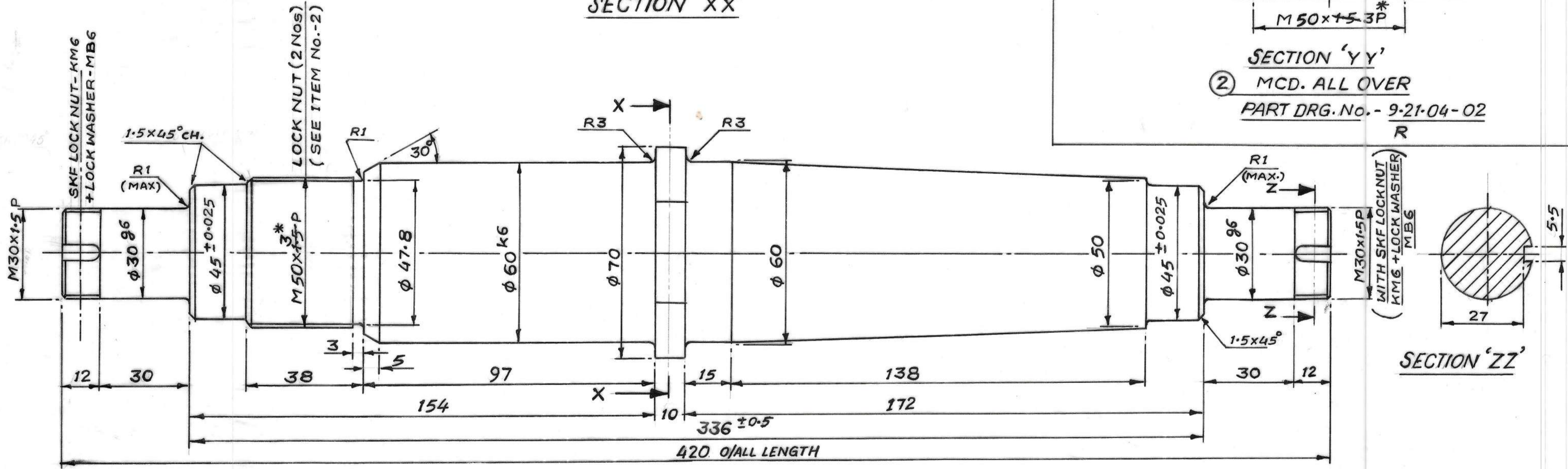


SECTION 'YY'

② MCD. ALL OVER

PART DRG. No. - 9-21-04-02

R



SECTION 'ZZ'

① MCD. ALL OVER (REMOVE ALL SHARP EDGES)  
PART DRG. No. - 9-21-04-01  $\Delta$   
R

NOTE:- PARTLY  
DRG. IS TRACED FROM 'JESSOP' DRG. NO. - 9-21-04-01 TO 06  
R  $\Delta$

\* PITCH OF THREAD MODIFIED TO 3MM FROM EARLIER OF 1.5MM ON 15-6-04

11/11/04  
15/6/04

CEMENT CORPORATION OF INDIA LTD.			
RAJBAN (HP)			
TRD.	<i>[Signature]</i>	SHAFT & LOCKING NUT	QTY
CHD.	<i>[Signature]</i>	FOR SIDE ROLLER ASSY.	WEIGHT
PSD.	<i>[Signature]</i>	(ROPE-WAY)	
APD.		Mat.-EN 9, IS:226.	REV
SCALE-1:1		DRG. No. - M1214-89	

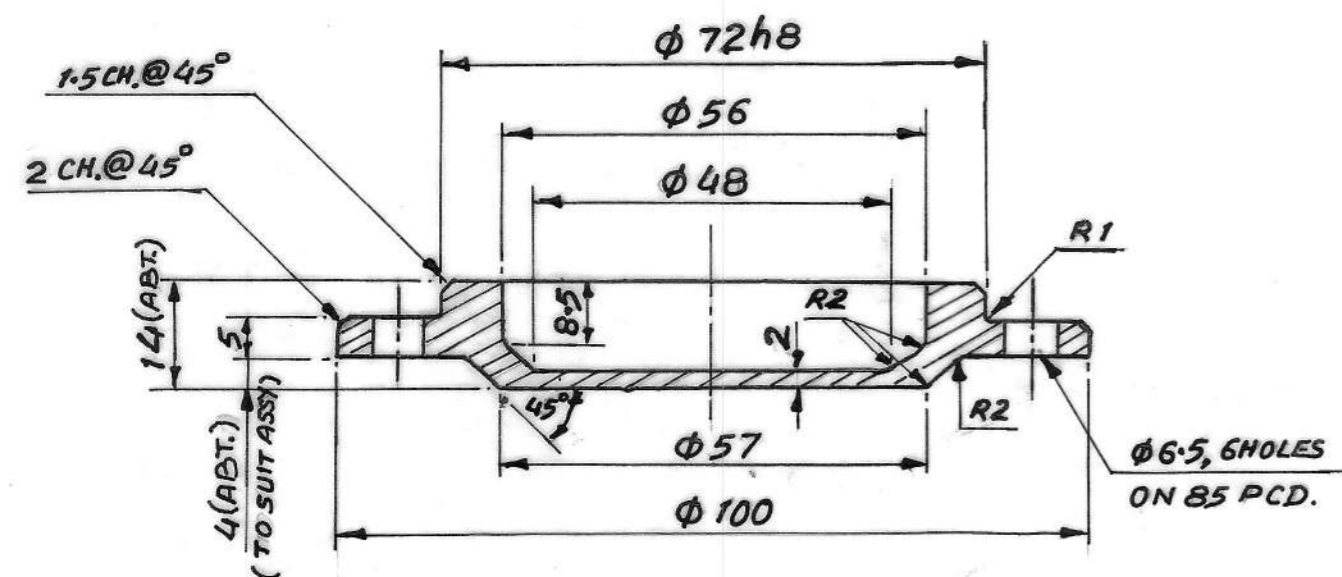
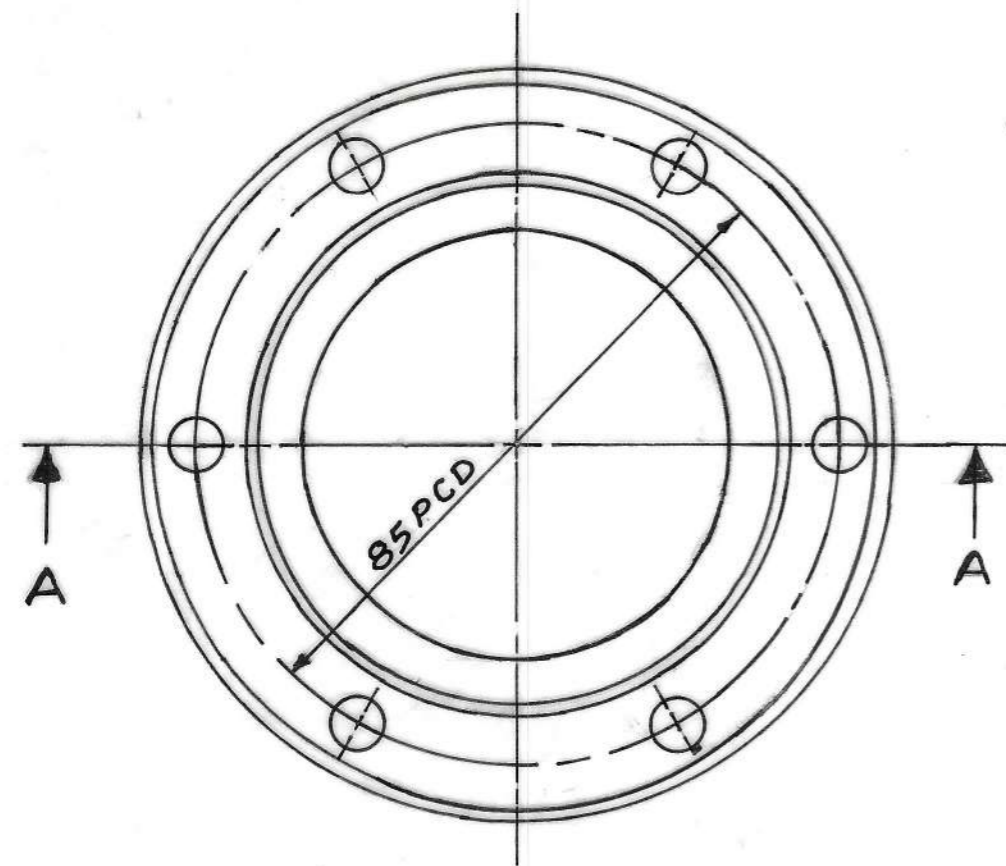
Sl. No	No. PERSET	MATERIAL	DESCRIPTION	WT. IN KG.	REMARKS
2	2	IS:226	LOCKING NUT	0.500	
1	1	EN 9	SIDE ROLLER SHAFT	6.700	

Sl. No.	MARK	PARTS NAME	QTY	REMARKS

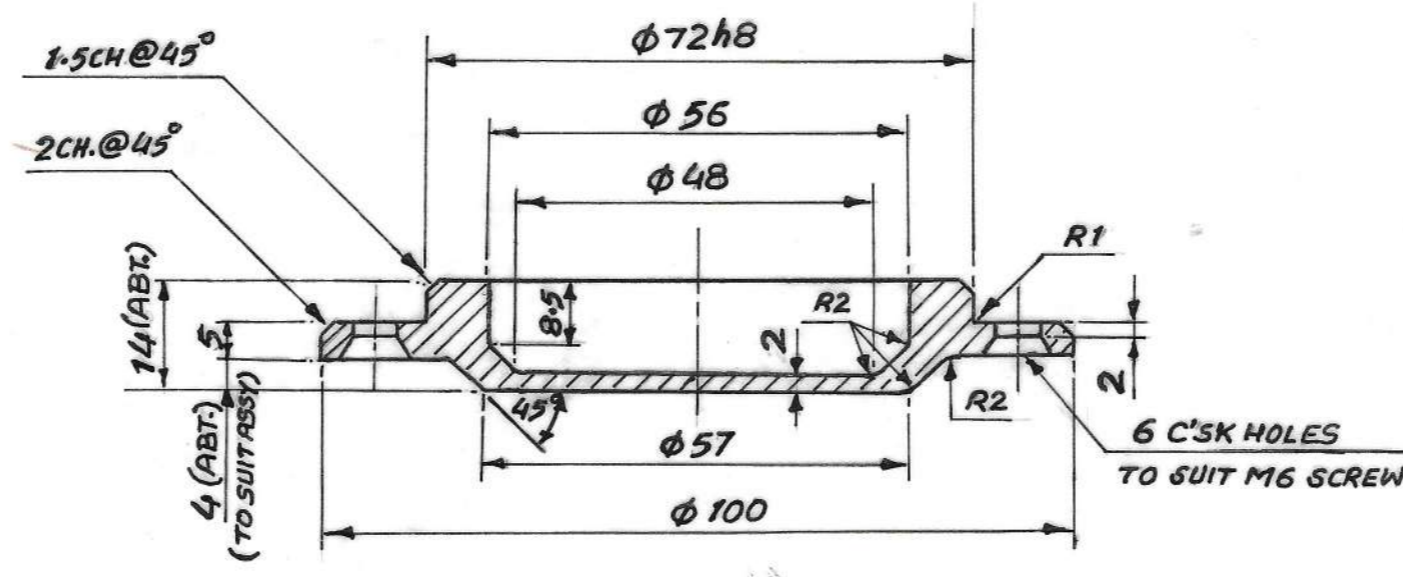
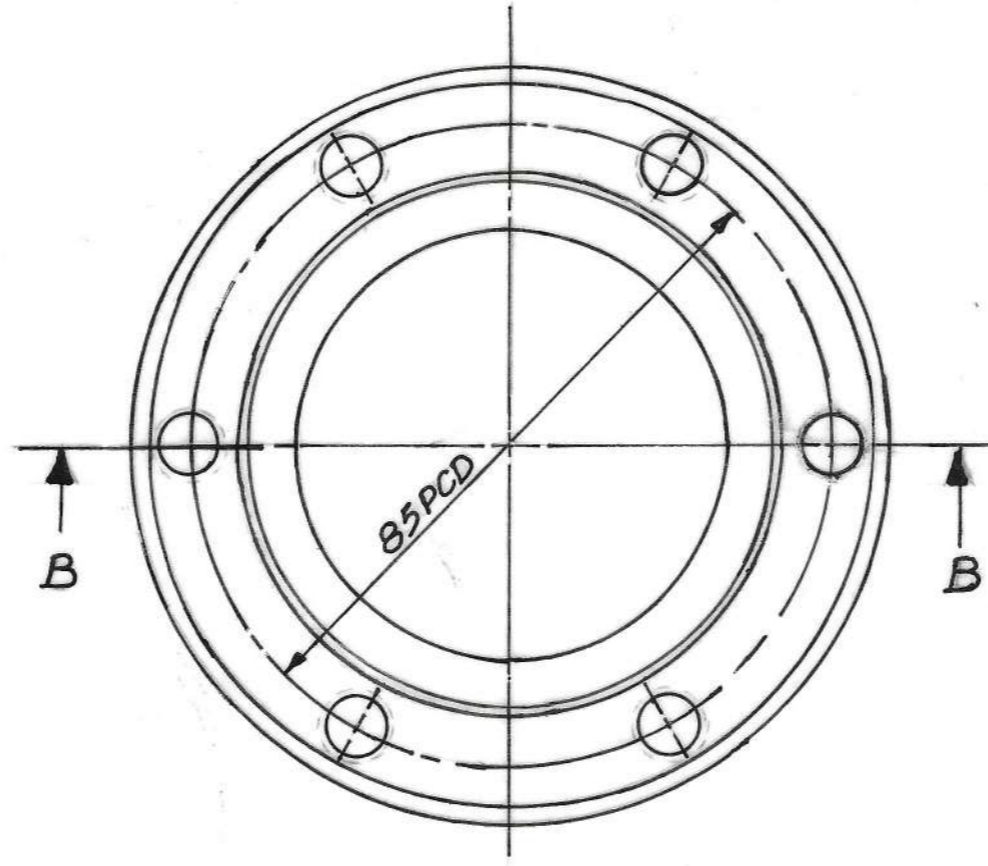


$\phi 62N7$	-0.009
	-0.039
$\phi 72h8$	-0.000
	-0.046

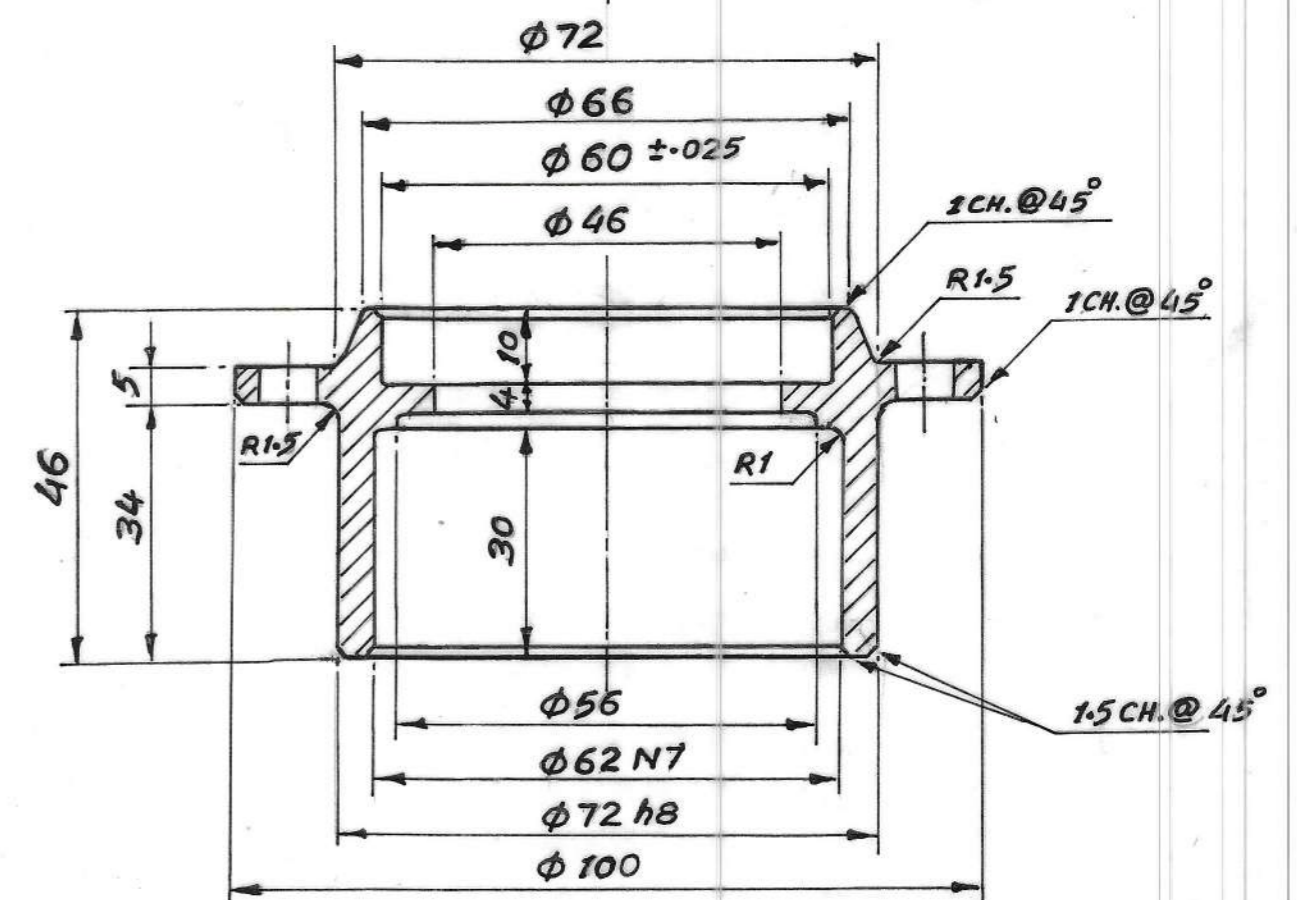
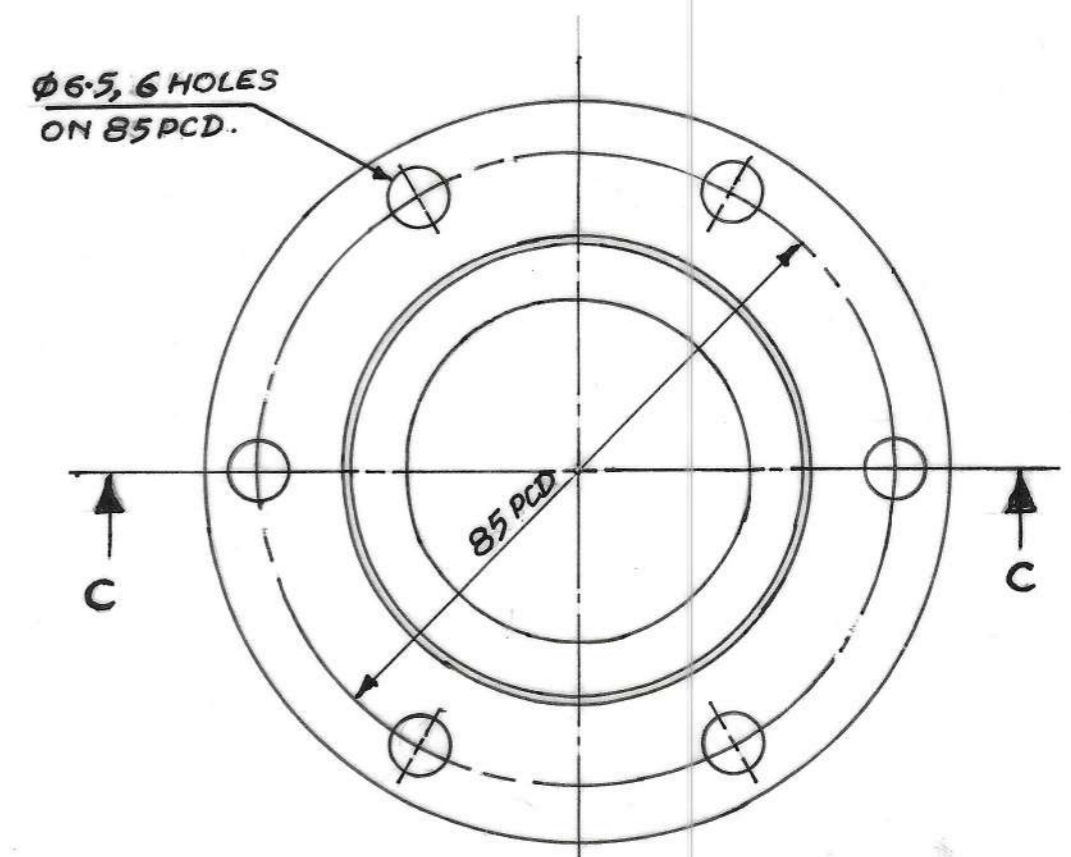
TOLERANCE TABLE



SECTION "AA"  
 ⑤ MCD. ALL OVER  
 PART DRG. No. - 9-21-04-06  
 R  
 COVER



SECTION "BB"  
 ⑤A MCD. ALL OVER  
 PART DRG. No. - 9-21-04-06/1  
 R  
 COVER



SECTION "CC"  
 ③ MCD. ALL OVER  
 PART DRG. No. - 9-21-04-04  
 R  
 SIDE ROLLER HUB

NOTE :-

DRG. IS PARTLY TRACED FROM JESSOP DRG. No. - 9-21-04-01 TO 06 R

CEMENT CORPORATION OF INDIA LTD.  
 RAJBAN (HP)

MARK	PARTICULARS	DATE	APPROVED	REMARKS	SL. No.	No. PER SET	MATERIAL	DESCRIPTION	WT. IN KG.	REMARKS	SCALE-1:1	DRG. No. - M1214-90
A	NO. PER SET 1 WAS 2 FOR ITEM NO 5 ITEM 5A (PART DRG. 9-21-04-06/1) ADDED	5.8.76.	Sd		5A	1	IS:226	COVER	•400			
					5	1	IS:226	COVER	•400			
					3	2	IS:226	SIDE ROLLER HUB	1.500			

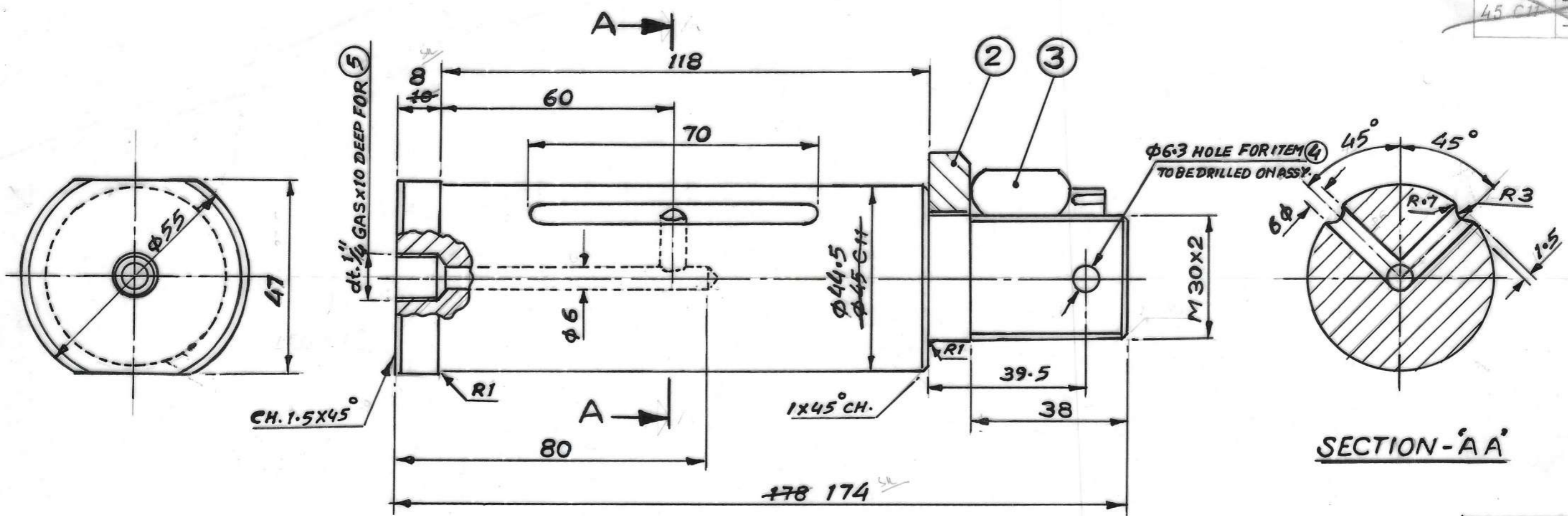
TRD.	CHD.	PSD.	APP.	QTY.
				HUB & COVERS FOR SIDE ROLLER ASSY. (ROPE WAY)
				WEIGHT
				REV
				MAT - IS: 226.



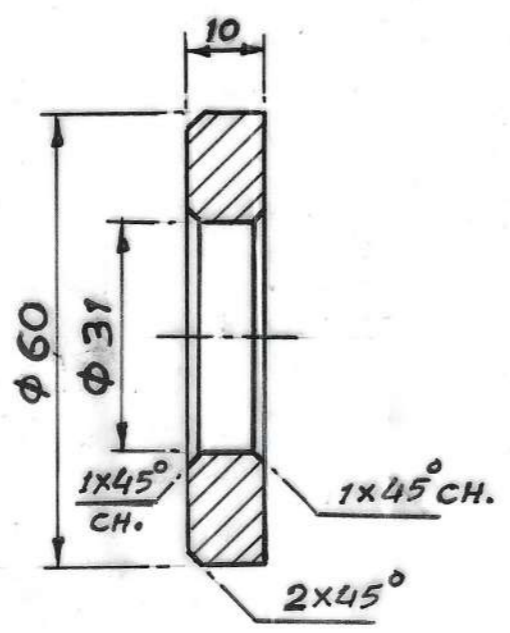




45 CH -0.30  
-0.290



① PIN  
MCD. ALL OVER



② WASHER  
MCD. ALL OVER

ITEM No	No. PER M/C	SPECIFICATION OF MATERIAL	DESCRIPTION	SOURCE	WT. IN KG.
5	1	TACALEMIT	TACALEMIT GREASE NIPPLE 1/4" GAS NB5975	L.P.	0.05
4	1	IS: 549	SPLIT PIN 6.3x60	L.P.	0.017
3	1	IS: 2232	CASTLE NUT M30x2P PRECISION GRADE	L.P.	0.266
2	1	IS: 226	WASHER	MFG.	0.2
1	1	EN 19A	PIN	MFG.	1.7

TOTAL WT. = 2.23 KG.

CEMENT CORPORATION OF INDIA LTD.  
RAJBAN (HP)

TRD.	CHD.	PSD.	APD.	SCALE	QTY.	WEIGHT TOTAL	REV.
				1:1	HANGER PIN, WASHER ETC. FOR 1 Cu.M BUCKET.	2.23 KG	

NOTE:- DRG. IS TRACED FROM 'JESSOP' DRG. No. - W 9-22-01-00 R

