

**TENDER ENQUIRY**

**Cement Corporation of India Ltd.,**  
(A Govt. of India Enterprises - ISO 9001:2008 Certified)  
Rajban Cement Factory,  
Rajban, Tehsil: Paonta Sahib (HP)-173028  
Enquiry No. MUST be quoted in all future  
TIN No.02040200105, ECC No. AAACC0949B-XM005, CIN-U74899DL1965GOI004322,

**E-MAIL/SPEED.POST**  
GSTIN No.- 02AAACC0949B1ZG  
Phone: 266227,222383  
Email: mm\_rjo@ccilt.d.in  
:ccimrjo@rediffmail.com

**Ref: RCF/MM/48(24)**

**Date: 25.04.2024**  
**Due Date: 20.05.2024**

**Sub: Uploading of NIT – on CCI's Public website**

Sl.	Description	Item Code	Unit	Quantity
01	Fixed Contact of LRS, LF2000 As Per Drg. No-E2210-240 Material:-Copper (Silver Coated)	172852417	No's	06
02	Moving Contact of LRS, LF2000 As Per Drg. No-E2210-240 Material:-Copper (Silver Coated)	172852418	No's	06

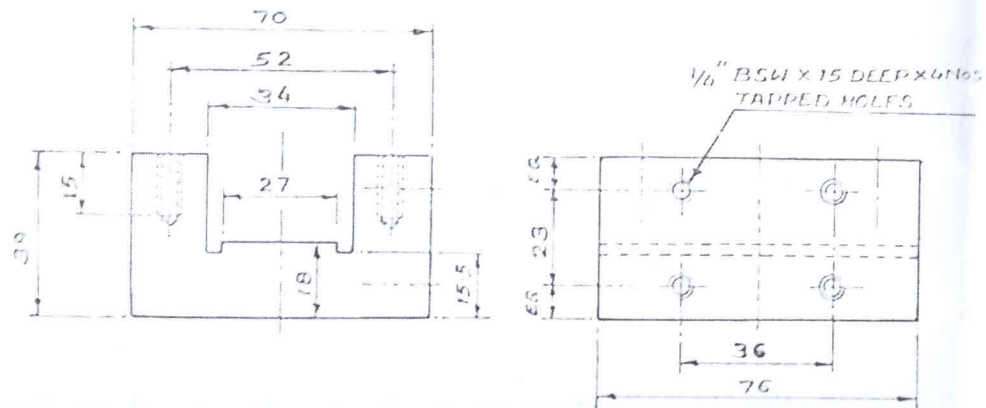
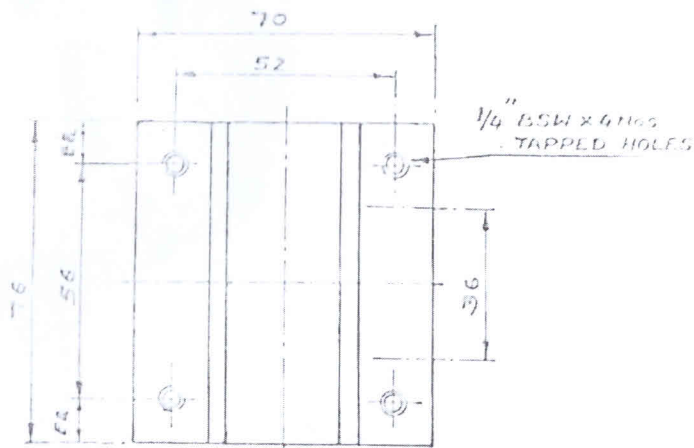
Interested parties may send their offer by post in sealed envelope containing two separate covers inside (i). credentials & supporting documents and (ii) Commercial cum price bid which should reach us before due date. If the credential are found suitable then the commercial cum price bid shall be opened. The decision of the corporation is final.

HOD (Systems)

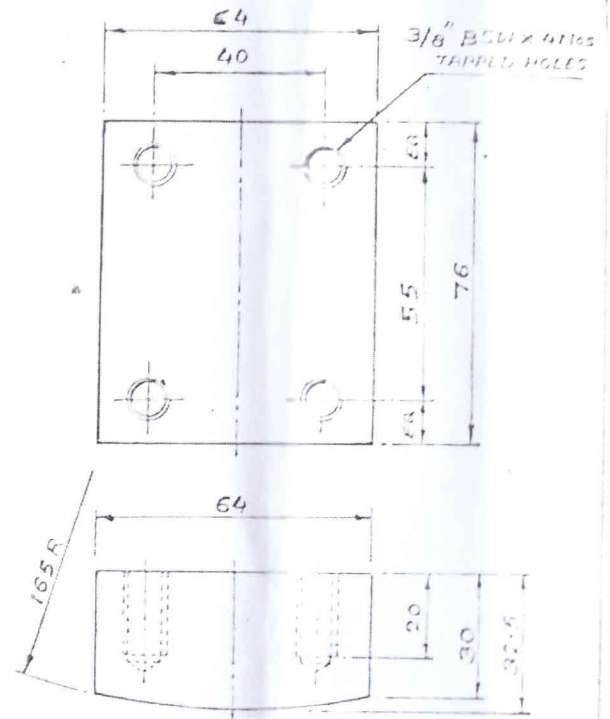
  
HOD (MM)

## General Terms & Conditions:

01. Confirm if prices are as applicable to Govt. Public – Sectors.
02. Prices shall be firm till completion of supplies.
03. Normally no price negotiation will be conducted. Tenderers are advised to quote minimum rates on minimum rates basis in their offer.
04. Please indicate clearly whether your price is based on FOR Destination basis i.e. by road up to Rajban, Tehsil Paonta Sahib Distt. Sirmour, Himachal Pradesh. For Godown prices, the element of packing & forwarding charges should be indicated specifically otherwise, it will be taken as NIL & in case of extra, the same shall be payable as per actual limited to 2%.
05. Please indicate your GST Regn. No. In absence of this information your firm will be treated as an unregistered firm and your prices will be loaded accordingly.
06. Our Corporation reserves the right to cancel or accept or reject any offer or tender in part or full without giving any reason or justification.
07. Our Corporation reserves the right to split the order on one or more parties.
08. The bidders do not have any claim on the award of work order / supply order.
09. Individual offer should be given for each enquiry. Clubbing of offers against more than one enquiry is not allowed. Such offers will be rejected out-rightly.
10. **DELIVERY PERIOD:** Quotations with vague delivery period like “Subject to prior sale” etc. are liable to be ignored. Delivery period should be realistic and specifically mentioned.
11. **EARNEST MONEY DEPOSIT:** NA
12. **SECURITY DEPOSIT:** NA
13. **DELAYED DELIVERY CLAUSE:** In case of any delay in the delivery (a) You will be charged with the Liquidated Damages @ 0.5% of the value of the un-delivered portion per fortnight or part thereof, maximum up to 5% of order value on landed cost basis. (b) Also we may resort to risk purchase as per clause 9 given below.
14. **RISK PURCHASE CLAUSE:** In the event of delay in supplies or failure to supply of material, CCI will have the rights to purchase the materials at the Risk and cost of supplier.
15. **ARBITRATION:** All disputes in case value exceeds Rs.50,000/- will be referred to Arbitration as per Indian arbitration Act. Arbitrator to be appointed by C&MD of CCI.
16. **JURISDICTION:** Paonta Sahib, Distt. Sirmour (HP) Civil Courts.
17. **GUARANTEE & WARRANTY:** The material offered against this tender has to be guaranteed for satisfactory working for a period of 18 months from the date of supply. The supplier shall warranty to replace/rectify or repair – free of cost at the factory site, the component or part of the items proved to have become unserviceable out of any of the above defects to materials with a period of 12 months from the date of use of materials or 18 months from the date of dispatch, whichever's earlier. In the event of the suppliers not complying with the above within reasonable time the Corporation will have the option to rectify/repair or replace the defective parts after giving 3 weeks' notice to the supplier and recover the cost from the supplier.



FIXED CONTACT  
 VI MCD. ALL OVER  
 WEIGHT = 1.5 KG



MOVING CONTACT  
 VI MCD ALL OVER  
 WEIGHT = 1.5 KG

CEMENT CORPORATION OF INDIA LTD  
 RAJBAN (HP)

DPN	2/1/12	FIXED & MOVING	QTY
CHD.	1/1/12	CONTACTS FOR L.R.S.	
PSI		LF 2000 (BHEL MAKE)	
APD		MAT:- COPPER (SILVER COATED)	
SCALE 1:1		DRG. No-E 2210-240	