



CEMENT CORPORATION OF INDIA LIMITED

(A Govt. of India Enterprise)
An ISO 9001:2008 Certified Company
CIN - U74899DL1965GOI004322
Bokajan Cement Factory - 782 490
Dist. Karbi Anglong: Assam
Phone 03675 - 246106/246109, Fax No. 03675-246107
E-mail ID: ccibcfmech1@gmail.com

NIT No.: BKO/MECH/GCT/2025-26

Dated: 22.03.2025

NOTICE INVITING E-TENDER (NIT) (Only through e-procurement)

Tenders are invited from competent person/Agency for “Hiring Services for Gas Conditioning Tower (GCT) shell Jacketing/Repairing and repairing of supporting structure at BKO”.

The complete set of tender document is available on websites:
etenders.gov.in/eprocure/app and www.ccilttd.in

E-TENDER No.	BKO/MECH/GCT/2025-26
MODE OF TENDER	E-procurement System (Online Part-I Techno-Commercial Bid and Part-II Price Bid through etenders.gov.in/eprocure/app , (CPP Portal)
Date of NIT available to parties to download	From 22.03.2025 Till 11.04.2025 (14.30 hrs.)
Earnest money deposit	Rs1,38,900/- to be paid through online mode through NEFT/RTGS in below given account details: Name of Beneficiary: Cement Corporation Of India Ltd. Account No.: 33067285257 Bank: State Bank Of India Branch: Bokajan IFSC Code: SBIN02028 SSI units registered with NSIC, MSME and Public Sector Undertakings are exempted from furnishing EMD only.
Date of starting of e-tender for submission of online EMD, Techno- Commercial Bid and Price Bid at etenders.gov.in/eprocure/app :	From: 22.03.2025 Till: 11.04.2025 (15.00 hrs.)

Date & time of opening of Part-A (i.e. Techno-Commercial Bid)	Date : 11.04.2025	Time: 15:05 Hrs
Date of opening of Part- B i.e. price bid shall be informed separately	To be informed separately	
Validity of offer	120 days from the date of the techno- commercial bid opening.	

Offer is invited as per details given below: -

NIT No.	Name of the work	Activity
BKO/MECH/GCT/2025-26	Tender For “Hiring Services for Gas Conditioning Tower (GCT) shell Jacketing/Repairing and repairing of supporting structure at BKO”	As per Part-III & IV

- 1) Only those tenders will be considered who fulfill the terms & conditions mentioned in the tender documents.
- 2) Only those tenders shall be considered who deposit the earnest money, tender cost and transaction fee by due date.
- 3) The price- bid should be only as per CCI’s price - bid format otherwise the tender is liable for rejection.

Note-

1. Tenderer must visit CCI website www.ccilttd.in for part-I & II and submit the same along with the Annexure-9, part -1 & II and their annexure are part of this tender, tenderer must sign and upload online along with techno-commercial bid of the tender. Part-I & II is available in English as well in Hindi in website for better understanding, however, in case of any contradiction in Hindi & English version, English version shall prevail.

HOD (MECH)

LIST OF ANNEXURES

	Part-I - Instruction to tenderers
	Part-II General terms & conditions
Annexure-I	Covering letter
Annexure-II	Integrity Pact
Annexure-III	Declaration that the officer of the Corporation are related to us/me
Annexure-IV	Unexecuted/ Present Contracts/Jobs in hand
Annexure-V	Additional information
Annexure-VI	Details of plant and machinery installed
Annexure-VII	Details of testing facility installed
Annexure-VIII	Details of orders executed including CCI during last three years
Annexure-IX	Declaration letter
Annexure-X	Part-III – Special Terms and Conditions
Annexure-XI	Part-IV – Technical Specification
Annexure-XII	Price Bid Pro-forma (Price schedule)
Annexure-1	Dispute resolution Clause-10 of Part-II
Annexure-D	Input Tax Credit

Note: - Part-I - Instruction to tenderers, Part-II General terms & conditions, all formats and submit the same along with Annexure-9 which is available in CCI web site www.ccilttd.in must be submitted by tenderer duly filled & signed.

Important instructions for E-Procurement

This is an E-Procurement event of CEMENT CORPORATION OF INDIA. The e-procurement service provider is NIC-Central Public Procurement Portal, New Delhi-110003

You are requested to read the terms & conditions of this tender before submitting your online tender. Tenderers who do not comply with the conditions with documentary proof (wherever required) will not qualify in the Tender for opening of price bid.

1	<p>Process of E-tender :</p> <p>Registration:</p> <p>The process involves vendor's registration with tender wizard e-procurement portal. Only after registration, the vendor(s) can submit his/their bids electronically. Electronic Bidding for submission of Techno-Commercial Bid as well as Price Bid over the internet will be done. The Vendor should possess Class III signing type digital certificate. Vendors are to make their own arrangement for bidding from a P.C. connected with Internet. NIC-CPPP is not responsible for making such arrangement. (Bids will not be recorded without Digital Signature).</p> <p>SPECIAL NOTE: THE PRICE BID AND THE COMMERCIAL BID HAS TO BE SUBMITTED ON-LINE AT etenders.gov.in/eprocure/app</p> <p>1).Vendors are required to register themselves online with etenders.gov.in/eprocure/app Register as Vendor Filling up details and creating own user id and password→ Submit.</p> <p>2).Vendors will receive a system generated mail confirming their registration in their email which has been provided during filling the registration form.</p> <p>In case of any clarification, please contact CCI/NIC-CPPP portal.</p> <p>Contact person (Cement Corporation of India):</p> <ol style="list-style-type: none">1. Mechanical Department CCI, Bokajan Cement Factory, Bokajan, Dist: KarbiAnglong Assam-782490 Contact No.: 03675-246109, + M: 8287932865 - HOD (Mech.) M: 6001097702 - Coordinator E-mail : ccibcfmech01@gmail.com 2. HOD (MM) CCI, Bokajan Cement Factory, Bokajan, Dist: KarbiAnglong Assam-782490, M: 8897856954- HOD (MM) E-mail : bokajanmm01@gmail.com <p>(A) Help Desk (NIC-CPPP): (E-commerce): ☎ 8077213001</p> <p>(B) System Requirement: Windows 8, 10 Professional Operating System, Internet Browser-9, 10 &11 Signing type Class 3 digital signature Java JRE 6 and above.</p> <p>THE VENDORS ARE ADVISED TO GO THROUGH THE <u>Help Manual</u> LINK AT etenders.gov.in/eprocure/app FOR GENERAL GUIDANCE ABOUT TENDER PROCESS.</p>
---	---

	<p>(A) Part I Techno-Commercial bid will be opened electronically on specified date and time as given in the NIT. Bidder(s) can witness electronic opening of bid.</p> <p>(B) Part II Price bid will be opened electronically of only those bidder(s) whose Part I Techno-Commercial Bid is found to be Techno-Commercially acceptable by CCI. Such bidder(s) will be intimated date of opening of Part II Price bid, through valid email confirmed by them.</p> <p>Note: The tenderers are advised to offer their best possible rates. There would generally be no negotiations hence please submit your most competitive prices while submitting the price bid. However, in case the lowest rate appears to be reasonable taking into account the prevailing market conditions, the order may be awarded to the lowest bidder and if the rate is still considered high, action as per prevailing instruction/guideline shall be taken.</p>
3	All entries in the tender should be entered in online Technical & Commercial Formats without any ambiguity.
4	<p>In case of failure to access the payment towards cost of tender document & EMD for any reason, the vender, in term, will not have the access to on line e-tender and no correspondence in this respect will be entertained and CCI will not be responsible for any such lapses on this account. Bidder(s) are advised to make remittance of tender fee and EMD through Online well in advance and verify completion of transaction in respect of tender fee and EMD.</p> <p>Vendors are instructed to upload documents in document library. Multiple documents can be uploaded. Maximum size of single document for upload is 5 MB.</p> <p>Once documents are uploaded in the library, vendors can attach documents through <i>Attach Document</i> link against the particular tender. For further assistance please follow instructions of Vendor Help Manual.</p>
5	All notices and correspondence to the bidder(s) shall be sent by email only during the process till finalization of tender by CCI. Hence the bidders are required to ensure that their corporate email I.D. provided is valid and updated at the stage of registration of vendor with Tender wizard (i.e. Service Provider). Bidders are also requested to ensure validity of their DSC (Digital Signature Certificate).
6	The responsibility of downloading the related corrigenda, if any, will be that of the responsibilities of the parties.
7	E-tender cannot be accessed after the due date and time mentioned in NIT.
8	<p>Bidding in e-tender & Reverse auction:</p> <p>(a). Bidder(s) need to submit necessary EMD and Tender fees (If ANY) to be eligible to bid online in the e-tender. Tender fees are non-refundable. No interest will be paid on EMD. EMD of the unsuccessful bidder(s) will be refunded by CCI.</p> <p>(b). The process involves Electronic Bidding for submission of Techno Commercial Bid as well as Price Bid is explained in Help Manual.</p> <p>a. In all cases, bidder should use their own ID and Password along with Digital Signature at the time of submission of their bid.</p> <p>b. During the entire e-tender process, the bidders will remain completely anonymous to one another and also to everybody else.</p> <p>(c). The e-tender floor shall remain open from the pre-announced date & time and for as much duration as mentioned above.</p> <p>(d). All electronic bids submitted during the e-tender process shall be legally binding on the bidder. Any bid will be considered as the valid bid offered by that bidder and acceptance of the same by the Buyer will form a binding contract between Buyer and the Bidder for execution of supply. Such successful tenderer shall be called hereafter SUPPLIER.</p> <p>(e). It is mandatory that all the bids are submitted with digital signature certificate otherwise the same will not be accepted by the system. Buyer reserves the right to cancel or reject or accept or withdraw or extend the tender in full or part as the case may be without assigning</p>

	<p>any reason thereof.</p> <p>(f). No deviation of the terms and conditions of the tender document is acceptable. Submission of bid in the e-tender floor by any bidder confirms his acceptance of terms & conditions for the tender.</p> <p>(g). Unit of Measure (UOM) is indicated in the e-tender Floor. Rate to be quoted should be in Indian Rupee as per UOM indicated in the e-tender floor/tender document.</p>
09	Any order resulting from this open e-tender shall be governed by the terms and conditions mentioned therein.
10	No deviation to the technical and commercial terms & conditions are allowed.
11	After submitting online bid, the bidder cannot access the tender, once it has been submitted with digital signature.
12	CCI has the right to cancel this e-tender or extend the due date of receipt of bid(s) without assigning any reason thereof.
13	The online tender should be submitted strictly as per the terms and conditions and procedures laid down in the website etenders.gov.in/eprocure/app of NIC-CPPP.
14	The bidders must upload all the documents required as per terms of NIT. Any other document uploaded which is not required as per the terms of the NIT shall not be considered.
15	The bid will be evaluated based on the filled-in technical & commercial formats.
16	The documents uploaded by bidder(s) will be scrutinized. In case any of the information furnished by the bidder is found to be false during scrutiny, EMD of defaulting bidder(s) will be forfeited. Punitive action including suspension and banning of business can also be taken against defaulting bidders.
17	Bidders are requested to read the vendor Help Manual in the home page etenders.gov.in/eprocure/app to familiarize themselves with the system before bidding.



Cement Corporation of India Limited

(A Govt. of India Enterprise)

An ISO 9001:2008 Certified Company

CIN – U74899DL1965GOI004322

Bokajan Cement Factory – 782 490

Dist. Karbi Anglong: Assam

Phone 03675 – 246106/246109, Fax No. 03675-246107

E-mail ID: ccibcfmech1@gmail.com

Annexure-X

NIT No.: BKO/MECH/GCT/2025-26

PART-III: SPECIAL TERMS AND CONDITIONS

Special Terms and Conditions for “Hiring Services for Gas Conditioning Tower (GCT) shell Jacketing/Repairing and repairing of supporting structure at BKO”. These Special terms and conditions, if found contradictory to any conditions given in Part-I&II terms and conditions, will prevail as per the conditions given therein:

1. GENERAL INFORMATION OF PLANT

Cement Corporation of India (CCI) is a wholly owned Government of India Profit making Company. At present it has three operating units at Tandur (Telangana), Rajban (Himachal Pradesh) and Bokajan (Assam). Bokajan Cement Factory (BCF) has a capacity of 1.98 lakh MT of cement production per annum and is one amongst the three operating units of CCI (A Govt of India Enterprise). Bokajan Cement Factory is located at Bokajan, 2 KM from Bokajan Railway Station, 15 Km away from Dimapur Town and about 250 Km away from Guwahati (Assam). Bokajan is well connected by Bus & Train route (on Guwahati- Dibrugarh Rail Line).

General Information for Tenderers:-

The “tenderers” refer to the external parties, vendors, suppliers, bidders who wish to participate in tendering process of CCI in CPP Portal (platform of short listing the competent & experience parties) having competent & relevant experience & expertise in the scope of work mentioned as objectives of tender can submit & participate in two bid system i.e. Techno-Commercial Bid & Price Bid, however Pre-Bid meeting is a meeting of CCI with parties to understand the overall objectives of tender. Parties can share their views based on the tender documents. CCI will note these & will initiate proposals to implement to the best from their latest purchase policy.

The techno-commercial qualification of the tenderer will move to next bid i.e. price bid. The tenderer has to read the specific requirements like Eligibility Criteria (turn over, experience, credentials etc). These criteria are responsible for tenderers to qualify techno-commercially (Part-A Bid). Once these bids of Part-A is received online from tenderers go for scrutiny. All the submitted scanned documents must be duly seal signed. After individual scrutiny individual’s bids, these will be further compared properly according to tender requirement. The tenderers (bids) after comparison will move ahead for price bid (Part-B) if qualified in Part-A i.e. techno-commercially.

The Tenderer must submit verifiable credential like WO/PO copies and Completion certificate. The same may be cross-checked by CCI. If it is found illegal then the party will lose consideration for participation in bids ahead & also in future. There will be legal actions against that false/fake information.

Tenderers are strongly advised go through the basic requirements of this tender procedure mentioned in Part-1 & 2 in form of annexure that have to be submitted properly & duly seal signed. Read the important instructions to avoid failures so that the things can go in your favor to qualify techno-commercially first.

2. PRE-BID MEETING:

- a. A pre-bid meeting open to all the prospective Bidder(s) will be held at the venue, date & time specified in NIT, wherein they shall be given an opportunity to obtain clarifications, if any, regarding the work and bid conditions.
- b. All Prospective vendors shall review the tender documents and attend the pre-bid meeting, along with their queries, if any, against the terms and conditions of the tender along with their suggestions. Vendors can also upload/seek clarification through e-mail or letter from tendering authority before the last date fixed for raising queries. The queries raised shall be shared with every bidder attending the pre bid meeting and be part of the minutes. No clarification or observation will be entertained after the pre-bid meeting is over.
- c. The vendors shall attend the pre-bid meeting at their own cost; the tenderer shall be allowed to visit the site prior to the pre-bid meeting under the supervision of the site/project in-charge on prior intimation as per date mentioned in NIT.
- d. The pre-bid meeting shall be open meeting and one time only, the date of meeting shall be decided by the corporation. In case of any change in schedule of the pre- bid meeting, the same shall be posted in website with one week notice. In case the tenderers fail to attend the meeting, their request for rescheduling and reorganizing the pre-bid meeting shall not be entertained.
- e. Raising the observations or suggestions by the tenderers shall not give them the right to modify the terms and conditions unless it is agreed/approved by the corporation.
- f. The pre-meeting shall be attended by the committee of officials of the corporation as decided by the competent authority.
- g. No further commercial or other deviations will be entertained in the tender process after pre- bid meeting.
- h. In case there is no modification in terms and conditions, the queries raised by the vendors and clarifications given by CCI committee shall be uploaded against the above tender on CCI website. The original tender terms shall be applicable.
- i. Based on the pre-bid meeting, the terms/specification/design will be freeze accordingly, if required. In case there is modification in the tender which shall be uploaded as a corrigendum in the tender along with the queries of all vendors and replies of CCI.
- j. Those parties, who have not attended the pre-bid meeting, can also participate in the tender. The tender terms will be applicable to all parties in uniform irrespective of attending the pre-bid meeting

3. SCOPE OF WORK:

Gas Conditioning Tower (GCT) shell Jacketing/Repairing and repairing of supporting structure at BKO. Detailed Scope of Work is mentioned in Part-IV of the tender document.

- a. Total Work Duration: Within 120 Days from the receiving of steel at site i.e. Bokajan Cement Factory. The Jacketing work needs to be completed in running condition. However, if required stoppage for any exigency situation, Plant will be stopped and discretion for the same is with CCI. The Tenderer should plan to complete the job in very minimum period by engaging sufficient resources round the Clock. The party needs to furnish the detailed completion schedule along with Bar/PERT/CPM charts stating activities to be completed.
- b. Site Mobilization: Successful Tenderer will be given about 7 days for manpower mobilization with tools and tackles and other accessories from the receiving of steel at site i.e. Bokajan Cement Factory and the same will be intimated by CCI.
- c. Scope for Tools & tackles, Crane, Scaffolding, Consumables etc.

Sl. No	Description	Scope	Remarks
1	Steel i.e. MS Plate and Structural steel	CCI	
2	Scaffolding	Tenderer	If required, Contractor may use Bamboo available in the Plant premises.
3	Consumables like Electrode, Grinding Disc, Buffing Disc, Oxygen & DA etc.	Tenderer	
4	Tools & Tackles	Tenderer	
5	Lifting Equipment	Tenderer	
6	PPE	Tenderer	
7	Paint i.e. Red-oxide and Heat resistance paint	Tenderer	
8	Insulation removal & dispose off	Tenderer	
9	Scrap removal & dispose off	Tenderer	
10	Arrangements for stay and footing for Workman & Supervisors/Engineers	Tenderer	CCI may provide only accommodation for sufficient persons on chargeable basis subject to availability
11	MS Bolt & Nuts, Ceramic Rope, Sealant etc. (if required)	Tenderer	
12	Lighting for Work and Main Switch for Welding, Extension Board etc.	Tenderer	Electricity is Free.

- d. Corporation will provide free electricity and water any other specific requirement will be on the discretion of CCI.

Apart from the above work content under contractor's scope shall also include the following:

- a. Transportation of material from the stores/workshop to site.
- b. Collection, removal & stacking of scrap generated at scrap yard.
- c. General cleaning/shifting of scrap of rejected materials or otherwise collected arising out of the erection activity.
- d. Rectification/modification as required after trial run of the equipment to the extent that such defects are attributed due to faulty erection.
- e. Scope of work specifies the major outlines of the jobs. The contractor shall do any minor modification/rectification/adjustment as per the site requirement without any extra charge.
- f. Transportation of all tools and tackles including chain blocks, welding machines and accessories, scaffolding material, Grinding machines etc shall be on supplier scope.
- g. Cost of damage to plant & machinery during execution of work will be recovered from the contractor bill.

GENERAL RESPONSIBILITIES OF THE CONTRACTOR:

- a. The contractor shall make his own arrangements of Tools and Tackles for Fitter, Welder etc. as may be required for the proper and timely completion of the job.
- b. The welding sets with cables, gas-cutting sets, pre heating ovens, Grinders etc. to be arranged by the contractor at his own cost.
- c. The contractor should depute one Site In-charge along with individual Engineer/Supervisor for respective job supervision and for the purpose of communication.
- d. The contractor shall at all-time comply with the instruction of the Corporation Engineers in the erection of the work in all its aspect in general, but with special reference to the work, accuracy of working, care in handling the equipment.
- e. While working, the contractor shall provide all safety equipment and take care of the safety measures as per stipulations of Factories Act & Rules. In case of accident of contractor & workmen, CCI is not liable to pay any compensation etc., on this account. In case of emergency, the contractor & workers will be allowed OPD at our health centre treatment and cost of treatment shall be recovered from the contractor.
- f. The contractor shall have to present himself or his Supervisors/Engineers/Safety Officer during the entire period of work, which will be responsible for the execution of work, & will receive instructions from CCI.

4. ELIGIBILITY CRITERIA:

The tenderer are to quote for **Gas Conditioning Tower (GCT) shell Jacketing/Repairing and repairing of supporting structure at BKO** on Lump-sum basis by one individual tenderer or by forming a consortium of two or more with overall responsibility resting with Leader of the consortium members.

The role of individual constituent consortium member shall be defined by the tenderer for specific work. The tenderer will sign MOU with the other consortium members. A copy of the (MOU) shall be submitted along with the Techno Commercial Bid. The successful tenderer shall submit a detailed Legal agreement later on before issuance of the Work order. The overall responsibility lies with the Leader of the Consortium (Tenderer). The eligibility of Tenderer to carry out the above scope of work has been defined below.

- a) The average annual financial turn- over of the participating tenderer during last three years ending 31st March should be Rs.20.83 Lakh.

- b) The copy of work orders executed/completion certificate etc. by tenderer during last seven years ending last day of month previous to the one in which applications are invited should be either of the following:
- Three similar completed works costing not less than Rs.27.77Lakh.
or
Two similar completed works costing not less than Rs.34.72Lakh.
or
One similar completed work costing not less than Rs.55.55Lakh
- c) The tenderer must have rich experience of successful completion of similar nature of works.
- d) The techno-commercial qualification of the parties will solely depend on their credentials submitted of similar nature of work i.e. Fabrication, Erection & Commissioning of GCT, Process Ducts, Kiln, Ball Mill, VRM, ESP/Baghouse with duct and Complete Cement Plant of jobs completed in Cement plants & equivalent plant.
- e) The Tenderer must submit verifiable credential like WO/PO copies and Completion certificate. The same may be cross-checked by CCI. If it is found illegal then the party will lose consideration for participation in bids ahead & also in future. There will be legal actions against that false/fake information.

5. **PRICES:**

- a. The price should be quoted strictly in our prescribed Price Bid Pro-forma only which is enclosed with the tender, both in figures and words to avoid ambiguities. In case of any difference in figures & words, the lower amount of the two will be taken into consideration.
- b. No escalations during the period of contract/execution of the entire contract/extended period on whatever reasons thereof will be allowed in prices. However, prevailing rate of all taxes and duties may be declared in techno-commercial bid.
- c. **Time is the essence of the contract.** Thus the party should be able to complete the work in minimum time, so as to avoid unnecessary planned shutdown/downtime. There is a penalty clause on exceeding the dead line on the job.
- d. Award of contract will be solely at the discretion of CCI.

6. **PAYMENT TERMS:**

There is no provision of advance payment with work order or LOI in the policy of CCI, however payment towards below mentioned are very attractive & it depends upon the momentum & speed of progress by a party to submit his running bill.

Stages of Payment

Sl. No.	Stage	Description of Work	% of total value of work excluding taxes
1	1 st	Site mobilization with tools & tackles, manpower, etc. once confirmed & certified at factory gate entry.	5%
2	2 nd	Starting the Fabrication work and Removal of insulation and dispose-off.	5%
3	3 rd	Jacketing/repairing of Bottom Hopper (L-6mtr approx.)	10%
4	4 th	Jacketing/repairing Cylindrical Part with supporting structure (L-8.5mtr approx.) from bottom.	15%
	5 th	Jacketing/repairing next Cylindrical Part with supporting structure (L-8.5mtr approx.)	15%
5	6 th	Jacketing/repairing of Top Conical with Cylindrical Part with supporting structure (L-10.40mtr approx.)	20%
6	7 th	Final Inspection, Trial Run, Scrap dispose-off, Scaffolding dismantling etc.	20%
7	8 th	After Performance of 6 months	10%

- a. Jacketing/repairing implies Fabrication, Erection, Final Welding, Leakage test & arresting if any, Final Grinding and Painting etc. of GCT shell and Supporting structures.
- b. All payment will be released through e-transaction mode within 30 days after successful completion of job and its certification after inspection by CCI. The work must continue to the next stage and Contractor should submit the RA bill after starting the work for next stage.
- c. Payments will only be released after submission Security Deposit towards contract.
- d. The GST amount will be paid once the same is filed by the party and reflected in our GST portal.
- e. Other statutory deduction will be made as per government norms.

7. MODE OF PAYMENT :

- a. Payment mode will be electronically i.e., through NEFT/RTGS.
- b. Payment shall be released by RTGS / NEFT on receipt and acceptance of material/ equipment at CCI site or approval of running bills in case of erection and commissioning charges

8. PENALTY/ L/D:

- a. Any delay beyond the scheduled completion period of the project will attract penalty @ 0.5% delay per fortnight of the total contract value subject to the maximum ceiling of 5% of the total contract value.
- b. The date of successful commissioning on the basis of certificate given by CCI will be treated as the date of completion for the purpose of calculating penalty.
- c. Recoveries for penalty of price bid will be made from the bills. This excludes the balance 10% amount retained towards performance guarantee / warranty.

9. EARNEST MONEY DEPOSIT (EMD)

Rs.1,38,900/- to be paid through online mode through NEFT/RTGS in below given account details:

Name of Beneficiary: Cement Corporation Of India Ltd.
Account No.: 33067285257
Bank: State Bank Of India
Branch: Bokajan
IFSC Code: SBIN02028

SSI units registered with NSIC, MSME and Public Sector Undertakings are exempted from furnishing EMD only.

10. SECURITY DEPOSIT (S.D.)

- a. The successful tenderer shall have to furnish Security Deposit equivalent to 5% (Five percent) of the total value of the contract by way of Bank Guarantee in terms of clause 2.0 of Part-II of the tender towards satisfactory performance of the contract within 15 days from the date of award of the work order to our Bokajan unit. If the party fails to submit SD within stipulated time, then Work order treated to be cancelled.
- b. The SD may be made either by bank draft or bank guarantee in favor of Cement Corporation of India Ltd. from any nationalized bank in the prescribed form valid for a period of 6 months beyond the date of completion of contract with a further claim period of 3 months. The EMD will be adjusted towards portion of security deposit.
- c. This Security Deposit shall be refunded within 3 months from the date of satisfactory completion of the job/commissioning and on the basis of certificates given by CCI.

11. PAYING AUTHORITY: HOD (FINANCE) Bokajan Cement Factory, Bokajan

12. INSPECTION:

- a. The equipment's overhauling/repair job shall also be inspected at works at regular intervals by the CCI representative. However, complete supervision shall be on contractor's scope.
- b. Inspection shall, in no way, absolve the contractor of their responsibilities of workmanship, quality and performance guarantee offered by them.

13. WARRANTY

The party shall warranty for perfection of the works executed for 6 months and also to rectify/repair free of cost at site case of any failure of the completed jobs immediately from the date of start of Plant. In the event of contractor not complying with the above within a reasonable time, the Corporation will have the option to rectify/repair or get the work done from other agency after giving 7 days notice to contractor at his risk and cost.

14. PERFORMANCE GUARANTEE (PG):

On successful completion of erection, commissioning & satisfactory completion of Warranty period, 10% (Ten percent) of the total contract prices (excluding taxes, duties & freight), will be released after deduction of LD & other recoveries, if any.

15. LAWS GOVERNING THE CONTRACT:

This contract shall be governed by the laws of Union of India in force. All the state & central labor law will be applicable to the worker to the working at the site.

16. STATUTORY REQUIREMENTS:

The tender should be accompanied by labor license, ESIC, IT, PAN & GST reg. no. The contractor shall be responsible for fulfilling all the statutory requirements (related to this contract) as deemed necessary by different agencies. The contractor will bear all cost for above statutory requirement.

17. RULES AND REGULATIONS:

The tenderer & their authorized contractor should have ESI Registration & ESI code no. under ESI Act 1948. The contractor should follow strictly all the Rules and Regulations of the Corporation as well as the regulatory/statutory, Local Authority in connection with the contract. The contractor will be held responsible for any violation of the Rules and Regulations of the Corporation and regulatory/statutory authority.

18. ACCIDENT:

The contractor shall be liable for compensation to his labors payable under the Workman's Compensation Act, 1923 or any other Act in case of accident. In case he fails to pay the compensation, the Corporation reserves the right to make the payment and recover the same from any of his bills or Security Deposit. The contractor must obtain License from the Labor Licensing Authority before starting the work / fifteen days' time of receiving LOI. Labor License and Insurance premium will be liability of the contractor.

19. OTHER TERMS AND CONDITIONS:

- a. The entry (in and out) of the contractor & workforce shall be regulated as per the instructions by the contractor Personnel/Security Departments.
- b. The Contractor Him/Her-self/Representative could not leave the site without proper information to the CCI. At least One Site In-Charge must be present in running condition & till the completion of the Job.
- c. The Contractor has to deploy Supervisor/Engineer in each shift to monitor the Work round the clock.
- d. Concurrence from CCI is required for dis-engaging Worker from site.
- e. The contractor shall maintain proper record under various Acts/Statutes in force and shall produce the same for inspection when ever required by CCI Statutory to do so.
- f. CCI will not be liable for any loss/damages to the contractor on account of non-availability of any fronts or services due to reasons beyond control of CCI.

- g. Insurance covering for workmen is in Contractors Scope. The contractor shall at all times indemnify CCI against all claims for compensation under the provisions of the Workmen Compensation Act, or any other law force by or in respect of any workman employed by him.
- h. Compliance to Labour laws: The contractor shall arrange the Labour license. The contractor will have to observe all the provisions of Labour laws in force or as amended from time to time in respect to his work force.
- i. The contractor shall have to present himself or his Site Incharge/Supervisors/Engineers during the entire period of work, which will be responsible for the execution of work, and for receiving any instructions from the Engineer in charge.
- j. The quality of work should be as per relevant standards and to the entire satisfaction of Engineer in charge of CCI.
- k. The contractor shall submit the list of employees at the time of commencement of work and any change thereof may be intimated to the management if required.
- l. CANTEEN FACILITIES: Canteen facility may not be provided by CCI to the workmen engaged by the party. Contractor has to make his own arrangements for the same.
- m. The quality of work should be as per relevant standards and to the entire satisfaction of CCI.
- n. Consumables required for works i.e., lubricants, diesel Kerosene, waste cloth, emery paper, grinding paste, cleaner etc shall be arranged by the contractor.
- o. The contractor will ensure issue of employment cards to his workers, which is required to be produced while entering the Factory at entry gate of CCI-Bokajan. The contractor shall submit the list of employees at the time of commencement of work and any change thereof be intimated to the management.
- p. The validity of the rates quoted shall be for 120 days from the date of opening of tender.
- q. All tools & tackles/measuring instruments required for executing jobs are the responsibility of tenderer.
- r. The successful tenderer must submit the
 - i. ID proof
 - ii. Any accidental policy cover,
 - iii. PPE If any,
 - iv. Aadhar card each of their employees who is attending the job inside the factory.
- s. The employee who is attending the job must cover under accidental policy/ESIC.
- t. The employee who is attending the job must use PPE during visit.
- u. The persons engaged by the contractor for taking up the jobs should not be under the influence of liquor or any other drugs while working. In case anybody is found in drunken condition, such person shall not be allowed to work. All Safety rules & regulations should be followed strictly. The safety of persons deployed by the contractor shall be the responsibility of the contractor. It is advisable to him to issue all required PPEs to their employees as on when required & insist to him to bear the same during the working hours. In case of any accident/injury to the persons engaged by the contractor, CCI will not be liable to pay anything in this regard.



Cement Corporation of India Limited

(A Govt. of India Enterprise)

An ISO 9001:2008 Certified Company

CIN – U74899DL1965GOI004322

Bokajan Cement Factory – 782 490

Dist. Karbi Anglong: Assam

Phone 03675 – 246106/246109, Fax No. 03675-246107

E-mail ID: ccibcfmech1@gmail.com

Annexure-XI

NIT No.: BKO/MECH/GCT/2025-26

PART-IV: TECHNICAL SPECIFICATION

In addition to the General terms & conditions under Part-I, Part-II & Part-III Special Terms & Conditions, the following conditions will also apply to the contract.

The contractor must plan to complete the shutdown tasks in the shortest possible time while ensuring optimal resource utilization. This can be achieved through effective resource allocation and round-the-clock productivity. The approach should include executing parallel activities wherever feasible, enabling the completion of all tasks within or ahead of the stipulated deadline.

1. SCOPE OF WORK:

It includes Jacketing/repairing of new rolled shell onto existing shell from start of bottom Hopper section to top height & repairing of supporting structures, ladders, walkway and further as directed by CCI, if required. The work shall be completed while the plant is in operation. However, if stoppage is required due to an exigency situation, CCI reserves the right to halt plant operations at its discretion.

Scope of work includes but not limited to the following:-

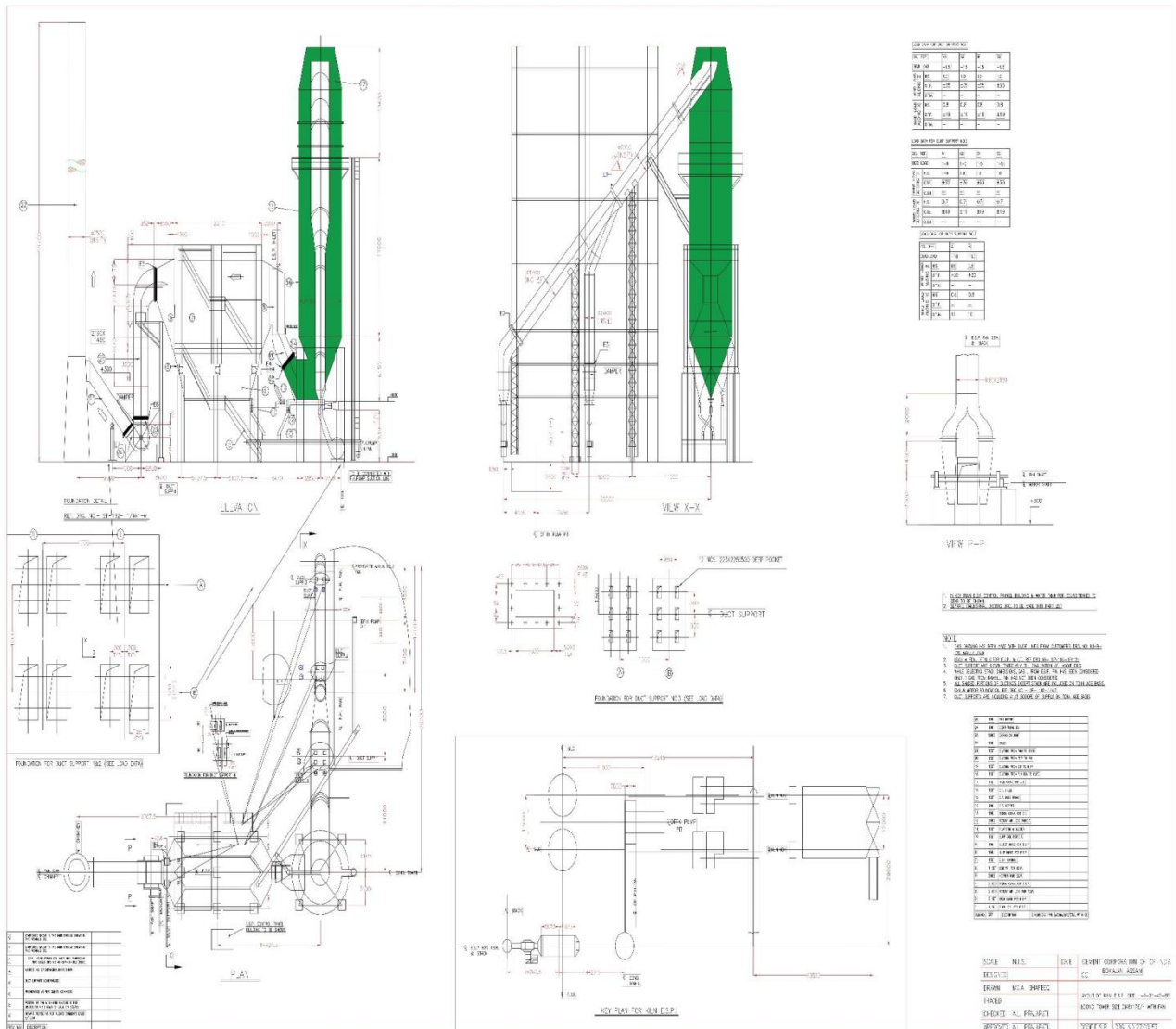
- a) Taking Measurements and recording the same from site and cross-check the same with Drawing.
- b) Fabrication of Shell, Stiffeners and supporting structures etc. to be replaced.
- c) Arrangement & Fixation of Supports, Scaffoldings etc to execute the shell replacement/repair at various height of GCT Tower.
- d) Removal and dispose-off of Insulation with Cladding sheet.
- e) Jacketing/Repairing of GCT and supporting structures.
 - i. Fixing of rolled shell plate onto existing shell & locking by tack welding.
 - ii. Final finishing of round rolled plates to make sure the roundness of shell for clearance to final seal welding.
 - iii. Stiffeners to be fixed according to the existing one or as requirement detailed by CCI.
 - iv. Repeat the procedures through-out the Shell.
 - v. Identification of supporting structures, walkway from preheater & of GCT for water nozzles & repair/replace the same to strengthen it.
- f) Remove all fixtures, temporary arrangements from GCT Shell/ Tower.
- g) Grinding and Finishing work
- h) Painting with Red-oxide and Paint (Enamel-Structures, Heat Resistance-GCT)
- i) Leakage test & Trial run.
- j) Removal & Dispose-off of Scraps.

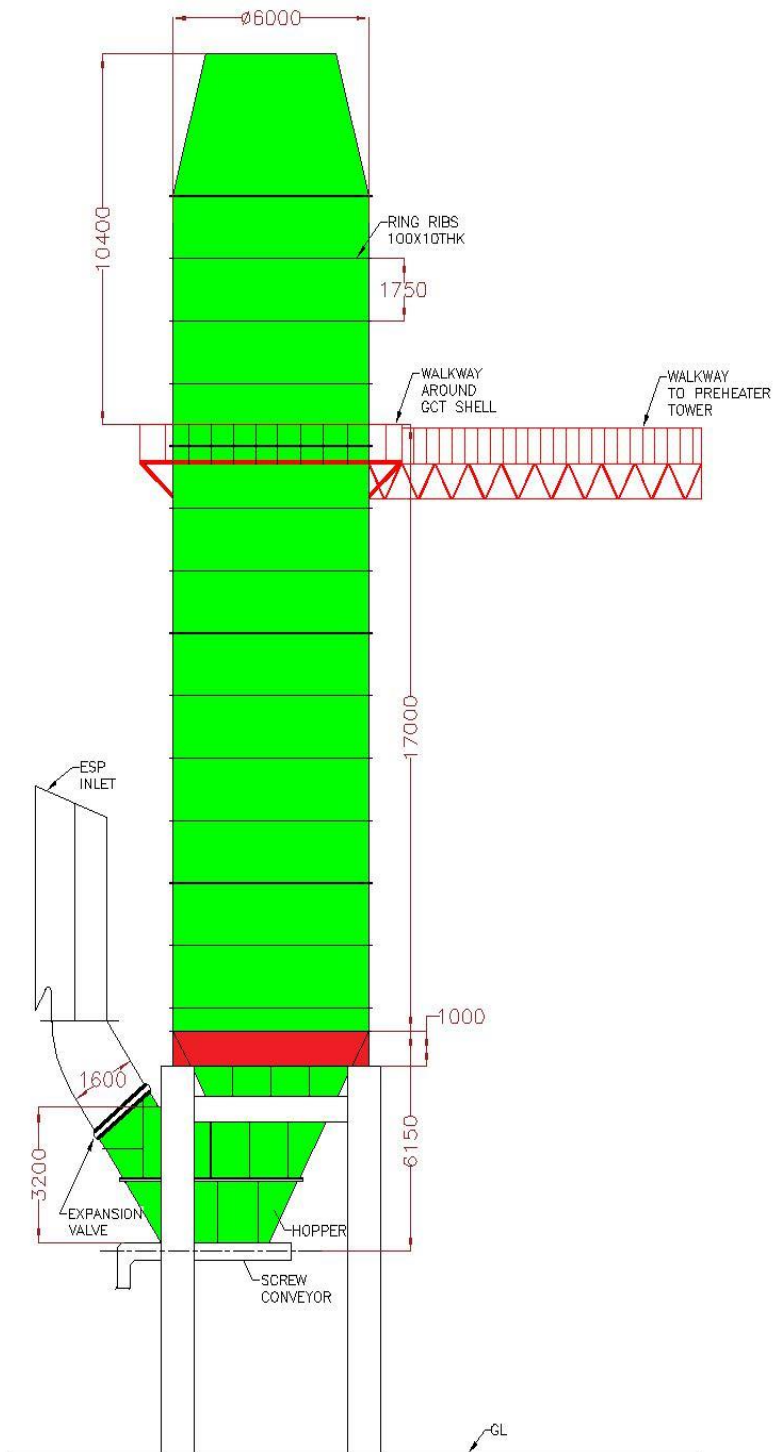
2. TECHNICAL SPECIFICATIONS:

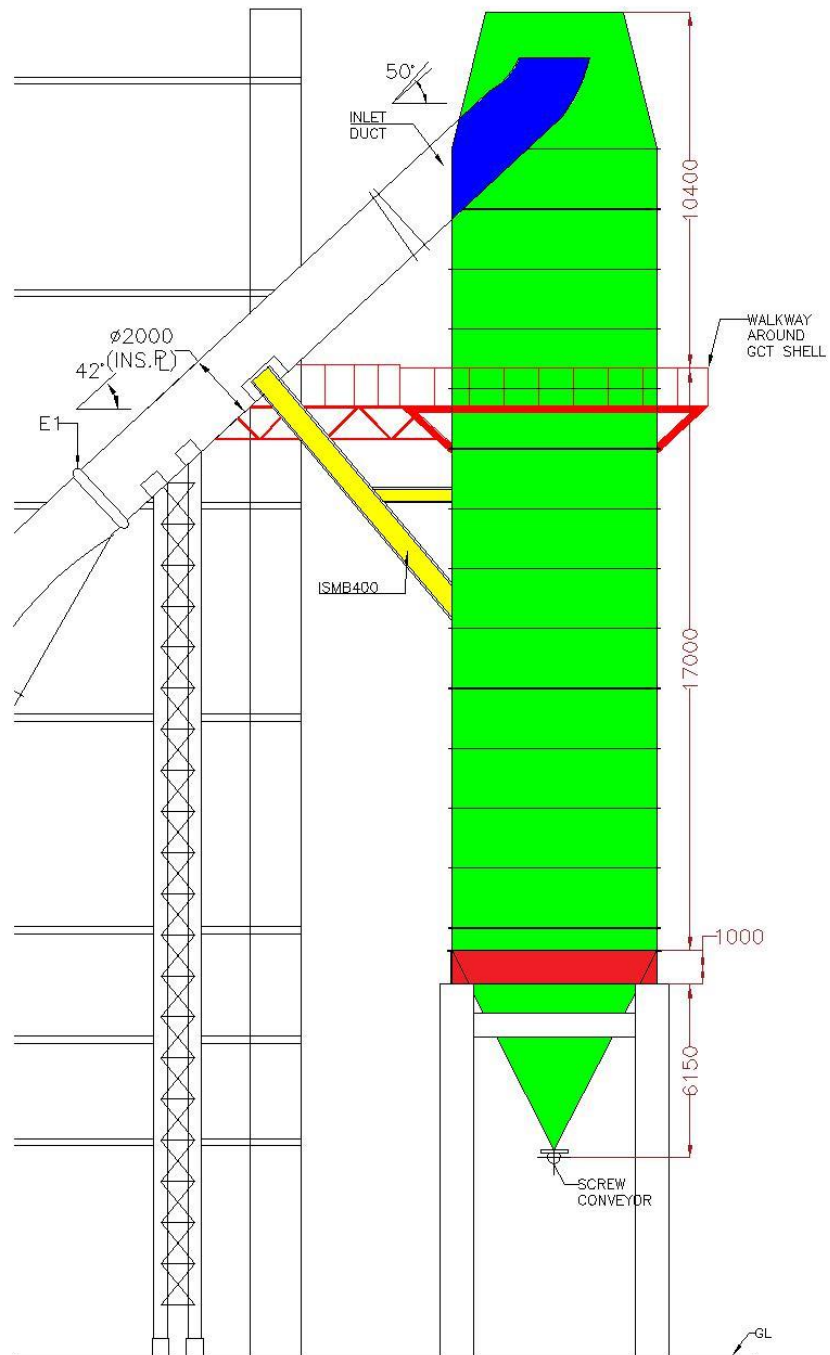
- a) GCT Shell with Support and associated structures
 - i. Shell ID: 6.0mtr & Shell Height: 33mtr. (approx.)
 - ii. Plate Thickness to be used is 8 mm (and as on requirement decided by CCI).
- b) Welding
 - i. Electrode :- 7018, Make- D&H Secheron/STANVAC/WEARRESIST/EWAC/Ador/ESAB
 - ii. V-preparation is required for joint welding of MS Plates and wherever required.
 - iii. Deposited weld metal shall be free from cracks, slag, cavities, undercuts and any other defects.
 - iv. Welders and work shall be protected from wind and weather considering safety aspects.
 - v. Structural steel shall not be painted or oiled on any area where welding is to be performed and shall be well cleaned to remove any paint, scale of at least 2 Cm on either side.
 - vi. The work shall be securely held in position by means of tack welds, service bolts, clamps or jigs before commencing welding so as to prevent any relative movement due to distortion, wind or other causes. When welding is liable to cause distortion, the work shall be securely held in approved frames or jigs.
- c) Fabrication & Erection
 - i. Taking Measurements and recording the same from site and cross-check the same with Drawing.
 - ii. Marking of plates, cutting, and edge preparation for welding including development of sections by taking actual measurement from the site.
 - iii. Important structures to be connected together shall be controlled assembled in fabrication yard so as to avoid mismatch of components during erection at the site.
 - iv. In order to facilitate handling, transportation and execution, the Contractor may fabricate the members in suitable sections and it should be correctly numbered for erection.
 - v. No welding shall be done until, as much of the Shell/structure, as will be stiffened thereby, has been properly aligned.
 - vi. As erection progresses, the work shall be securely welded, to take care of all dead load, wind, and erection stresses.
 - vii. All standard items like bolts, nuts, lock nuts, plain washers, spring washers, gaskets, asbestos rope and other connecting hardware as may be required for the fitting of the above fabricated equipments/ items is in Contractors Scope.
 - viii. Surfaces shall be cleaned by wire brush from oil grease, dirt, mill scale, rust, slag or flux, deposit, dirt and other foreign materials.
 - ix. The Owner/Engineer/Supplier's representative shall inspect the fabrication & erection work during various stages of manufacture for quality of workmanship and dimensional accuracy.
 - x. Rectification of items due to defective workmanship or defect that might arise during inspection is in Contractors scope.
 - xi. The Contractor should ensure deployment of the requisite number of supervisory staff round the clock to ensure quality and progress of work
- d) GCT is self-supported steel (cylindrical) tower to condition the hot gases from PH & there is bottom cone hopper discharge. The Contractor shall be fully responsible for the correct alignment of GCT Shell & Supporting structure.
- e) Paint
 - i. First primer coat, preferable Red Oxide Zinc Chromate, shall be applied immediately after preparation of surfaces by necessary means. Second coat shall be applied after ensuring the complete drying of first coat.
 - ii. Smoke Grey Enamel Paint to Supporting and Associated structures.
 - iii. ES-70 HT-ENERSAVE (SPL), Make-STANVAC or Equivalent Paint of Brand of Repute for GCT Shell.
- f) Safety:- Major Outline is mentioned but not limited to this.
 - i. Only trained and certified personnel should be allowed to work at height.
 - ii. Clearly demarcate the work zone with proper barricading and warning signage.
 - iii. Use of Full Body Harness: All workers must wear a full-body safety harness with double lanyards (lifeline) anchored to a secure point.
 - iv. Workers must use safety Helmet, gloves etc. and appropriate PPE

- v. Scaffolding & Platforms: Should be properly erected and inspected as per Safety norms. Ensure proper guardrails are in place.
- vi. No unauthorized entry should be allowed in the work zone.
- vii. Use certified lifting tools and ensures proper communication during lifting operations. All lifting tools and tackles (slings, shackles, chain blocks, etc.) must have valid test certificates.
- viii. Tools must be tied to prevent falling. Materials should be stored securely to prevent accidental falls.
- ix. Work should be halted in adverse weather conditions.
- x. Ensure proper insulation and grounding of electrical connections.
- xi. Fire Prevention: Keep fire extinguishers at work locations and prohibit smoking in work areas.
- xii. All tools and tackles should be inspected before use for defects. Any damaged or defective tools must be removed from service immediately.
- xiii. Ensure guards are in place on grinders and cutting machines.
- xiv. Contractor must ensure a safe, compliant, and efficient fabrication & erection process while minimizing risks.

g) A Schematic drawing is attached below for your ready reference and The Contractor has to take the measurement and crosscheck the same with Drawing before Fabrication & Erection.









Cement Corporation of India Limited

(A Govt. of India Enterprise)

An ISO 9001:2008 Certified Company

CIN – U74899DL1965PLC004322

Bokajan Cement Factory – 782 490

Dist. Karbi Anglong :: Assam

Phone 03675 – 246106/246109, Fax No. 03675-246107

E-mail ID: ccibcfmech1@gmail.com

Annexure-XII

NIT No.: BKO/MECH/GCT/ 2025-26

PRICE BID

Sub: Hiring Services for Gas Conditioning Tower (GCT) shell Jacketing/Repairing and repairing of supporting structure at BKO.

SI No.	Description of Work	UOM	Basic Rate (Rs.)
1	Jacketing/Repairing of Gas Conditioning Tower (GCT) shell and repairing of supporting structure at BKO.	Lump sum	
	Total		

1. GST will be extra. GST on the quoted rate will be paid as per the prevailing Act of GST and provision made there under only after reflecting in the GST portal.
2. The lowest Quoted rate shall be evaluated on the individual L-1 basis.
3. Certified that the above rates have been given in accordance with the technical bid of the tender.

(Signature of the Tenderer)
With company's stamp
Name and designation

NEW CLAUSE FOR INCLUSION IN STANDARD TENDERS**10. DISPUTE RESOLUTION****1. Amicable Settlement through Mediation**

- 1.1 In the event of any dispute, controversy, or claim arising out of or in connection with this Agreement, including its interpretation, performance, or termination, the Parties shall first make all reasonable efforts to resolve the dispute amicably through mutual discussion and negotiation.
- 1.2 If the Parties fail to resolve the dispute within 30 (thirty) days from the date of written notification of the dispute by one Party to the other, the dispute shall be referred to mediation. The mediation shall be conducted in accordance with the provisions of the Mediation Act, 2023, or any statutory amendment or re-enactment thereof.
- 1.3 The mediator shall be:
 - a. A retired High Court Judge, or
 - b. A retired high-ranking officer with relevant technical expertise.
- 1.4 If the Parties fail to agree on the appointment of a mediator within 15 (fifteen) days of reference to mediation, the mediator shall be appointed in accordance with the procedure prescribed under the Mediation Act, 2023.
- 1.5 The mediation process shall commence within 15 (fifteen) days from the date of appointment of the mediator and shall be concluded within 60 (sixty) days unless extended by mutual consent of the Parties.
- 1.6 The costs of mediation, including mediator fees, shall be shared equally by the Parties unless otherwise agreed in writing.
- 1.7 Any settlement reached through mediation shall be recorded in writing, signed by both Parties, and shall have the same binding effect as a judgment or decree under law.

2. Judicial Remedies

- 2.1 If the mediation process fails to resolve the dispute reached, either Party shall be entitled to seek judicial remedies before the competent courts as specified herein.
- 2.2 The courts having Jurisdiction at New Delhi shall have exclusive jurisdiction over all disputes, controversies, or claims arising out of or relating to this Agreement.

3. Governing law & Applicability of AMRCD

- 3.1 This Agreement and any dispute arising out of or in connection with it shall be governed by and construed in accordance with the laws of India.
- 3.2 In that event of any dispute or difference relating to the interpretation and application of the provisions of commercial contract(s) between Central Public Sector Enterprises (CPSEs)/ Port Trusts inter se and also between CPSEs and Government Departments/ Organizations (excluding disputes relating to Railways, Income Tax, Customs & Excise Departments), such dispute or difference shall be taken up by neither party for its resolution through AMRCD as mentioned in DPE OM No. 05/0003/2019-FTS-10937 dated 14th December, 2022 and the decision of AMRCD on the said dispute will be binding on both the parties.

CEMENT CORPORATION OF INDIA LIMITED
BOKAJAN CEMENT FACTORY
(A Govt. of India Enterprises - ISO 9001:2015 Certified)

INPUT-TAX CREDIT

We are entitled for availing of INPUT-TAX Credit in respect of GST paid on materials. For availing INPUT-TAX Credit, following documents are required to be submitted along with supply of materials:-

- i) A clear GST invoice, having HSN/SAC code duly stamped and signed by the supplier.
- ii) The GST rate and amount should be clearly shown separately in the Tax-invoice.
- iii) The copy of the Tax-invoice or as specified in GST meant for transporter.
- iv) In Addition to above supplier will also upload tax Invoice on GST Portal & pay GST to Govt.
- v) The supplier has to ensure GST registration in Assam for billing of , as place of supply of services is Assam.

Please confirm all the documents would be submitted along with each and every supply for availing the INPUT-TAX Credit. In case any of the documents is not submitted, INPUT-TAX Credit is not allowed by Tax authority on the GST paid by us, then the amount will be debited from your bill for the concerned supply or other payment.

Please submit this Annexure duly sealed and signed along with techno-commercial bid as token of acceptance of the above

Signature of Tenderer
with stamp & seal